

# Colorado River Commission of Nevada





## Natural Resources Group Hydrologic Update August 8, 2017



# Unregulated Inflow & Storage

As of August 7, 2017

Projected unregulated inflow to Lake Powell	MAF*	% Avg**
WY 2017 (Forecast):	12.2	113%
April-July 2017 (Forecast):	8.2	114%

Storage	Elevation (f)	MAF*	% Capacity	 Δ year
Lake Mead	1,079.6	10.0	38%	 6.2 ft
Lake Powell	3,634.1	15.3	63%	 16.8 ft
Total storage***		33.8	57%	 2.7 maf

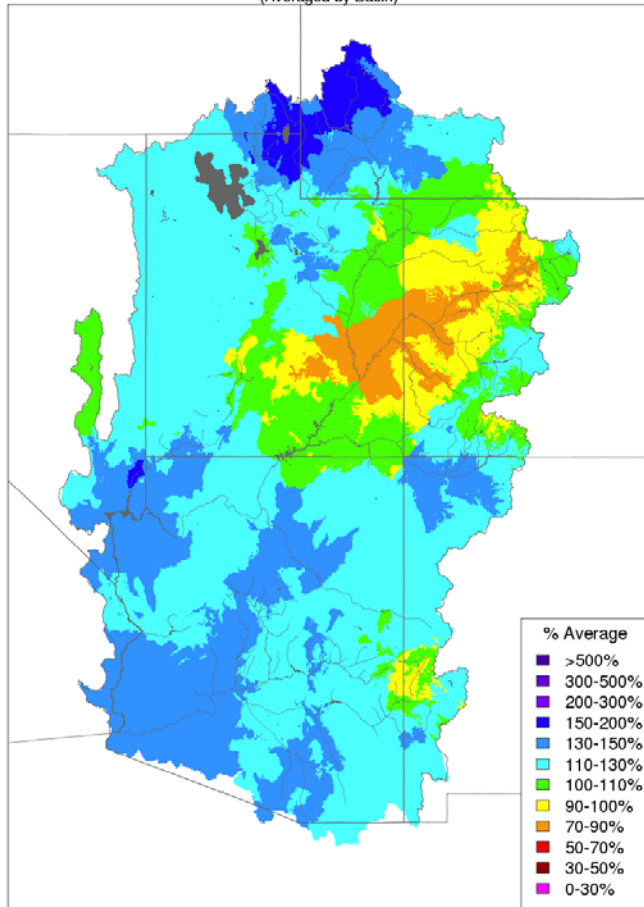
\*MAF=Million Acre-Feet

\*\*30-year average, from 1981-2010 (current normal)

\*\*\*Total storage includes additional Upper and Lower Basin reservoirs

# Precipitation

Water Year Precipitation, October 2016 - July 2017  
(Averaged by Basin)



Prepared by NOAA, Colorado Basin River Forecast Center  
Salt Lake City, Utah, [www.cbrfc.noaa.gov](http://www.cbrfc.noaa.gov)

Month	Precipitation (% of average)
OCT	60
NOV	75
DEC	180
JAN	235
FEB	120
MAR	70
APR	90
MAY	95
JUN	22
JUL	126
<b>TOTAL</b>	<b>113</b>

Above Lake Powell WY Precipitation to date: 113% or (30.6")

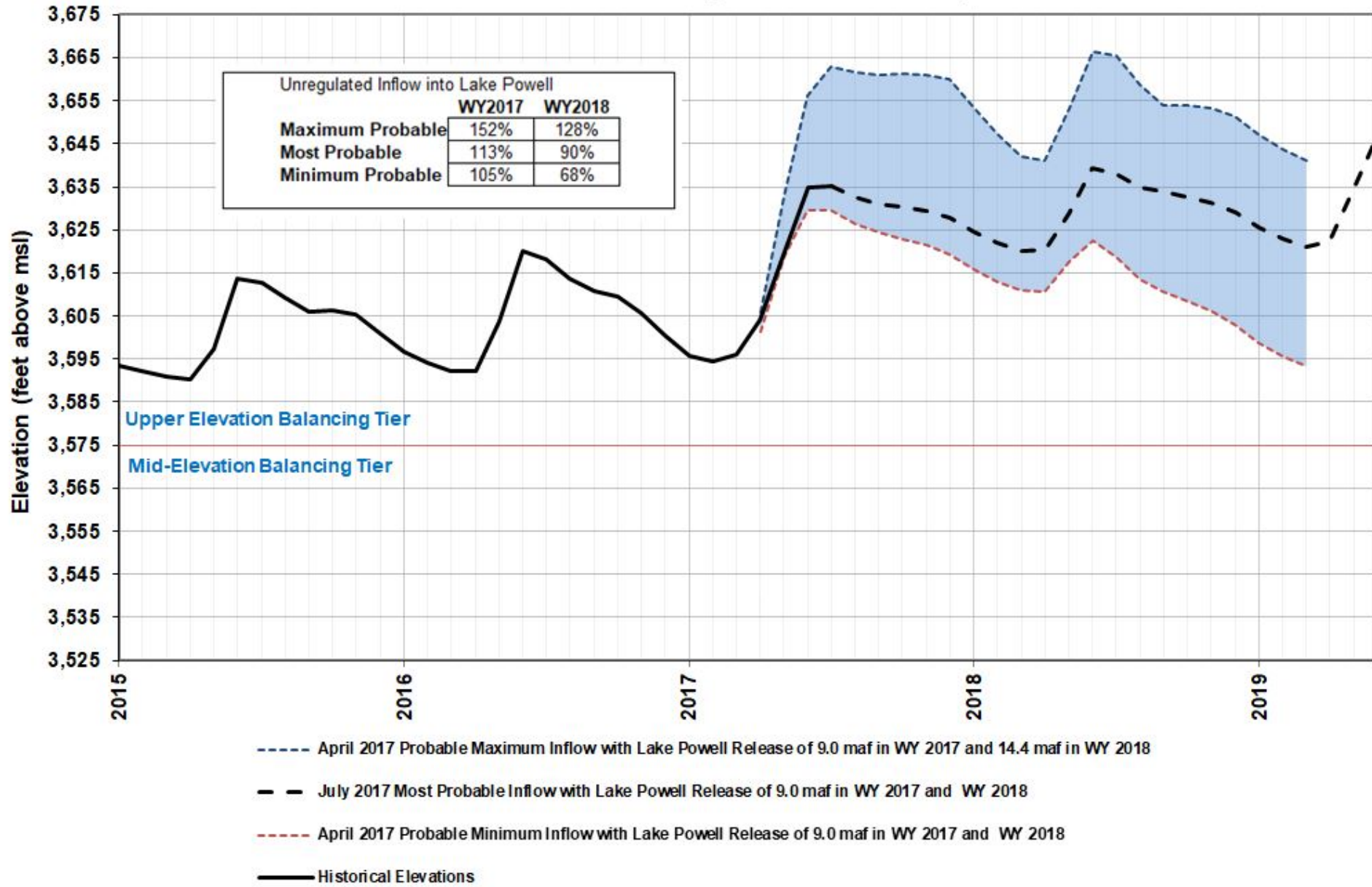
# Lower Basin Side Inflows

Month	5 year average (KAF)	Observed Inflow (KAF)	Percent of average	Difference from 5 year average (KAF)
October-16	71	78	110%	7
November-16	65	77	120%	13
December-16	51	63	124%	12
January-17	64	128	201%	64
February-17	72	150	208%	78
March-17	46	97	211%	51
April-17	39	92	236%	53
May-17	26	39	150%	13
June-17	10	18	186%	8
July-17	77	89	115%	11
August-17	127			
September-17	110			
October-17	74			
November-17	65			
December-17	51			
WY 2017 totals	757	1068	141%	311
CY 2017 totals	757	1036	137%	279

Additional 3.8 feet in Lake Mead from above average side inflows this water year.

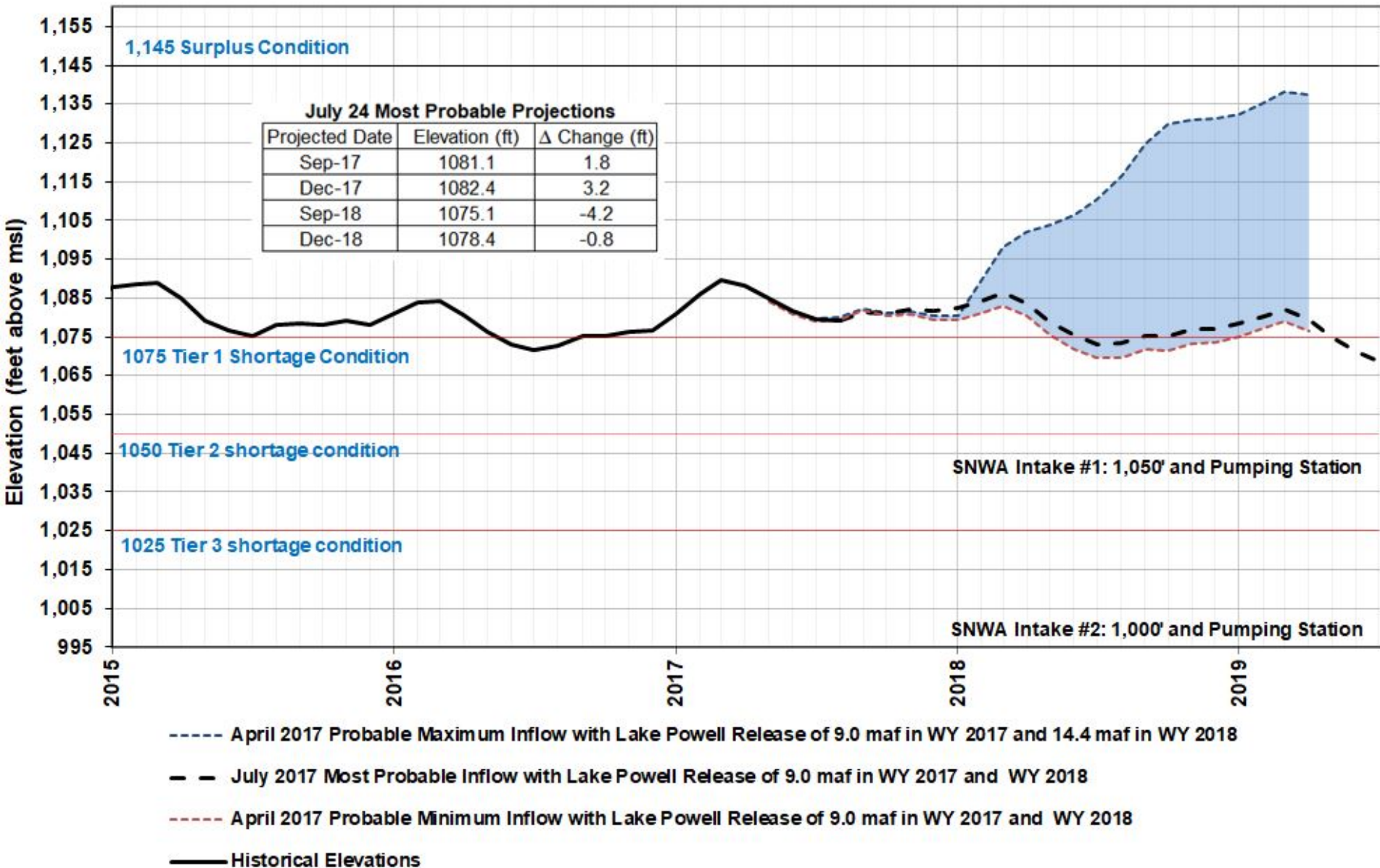
# Lake Powell Projections

## Reclamation's July 2017 24-Month Study



# Lake Mead Projections

## Reclamation's July 2017 24-Month Study



# Water Use in Southern Nevada

January- June 2017

2017: Consumptive Use = 109,340\* af

2016: Consumptive Use = 105,824 af

**Difference = 3,516 af**

\*Subject to final accounting.



# Colorado River Commission of Nevada

## Questions?

Warren Turkett, Ph.D.  
wturkett@crc.nv.gov

