



Colorado River Commission of Nevada

Hydrology and Water Use Update

Warren Turkett

April 13, 2021





Summary

Lake Powell

- Drought conditions are causing below average inflow forecasts.
- Unregulated inflow for water year¹ 2021 is forecasted at 45% of average.
- Upper Basin snowpack peaked at 83% of the seasonal average.

Lake Mead

- Lake Mead is forecasted to decrease about 16 feet in elevation by the end of calendar year 2021.
- Lower Basin conservation programs have conserved roughly 3.5 million af or about 40 additional feet in Lake Mead.

Nevada Water Supply

- Southern Nevada has about 9 years of water supply banked. ²
- **In 2020, Southern Nevada used 15% less than its annual allocation.**

| Storage | Elevation (f) | % Capacity | Change since last year |
|-------------|---------------|------------|------------------------|
| Lake Mead | 1,084.0 | 40% | -14.1 ft |
| Lake Powell | 3,566.2 | 36% | -34.3 ft |

Data retrieved April 5, 2021

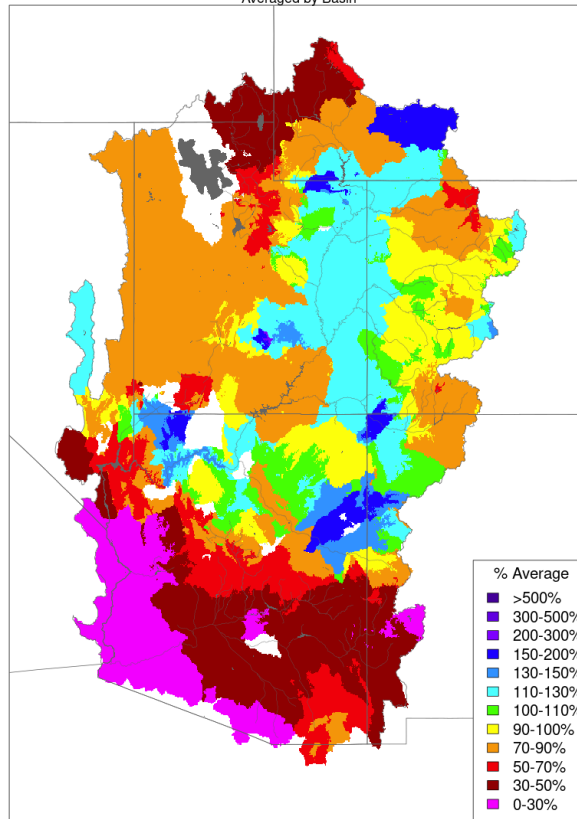
¹ Water year is defined as October through September.

² Based on 2020 consumptive use and storage volumes through 2020.



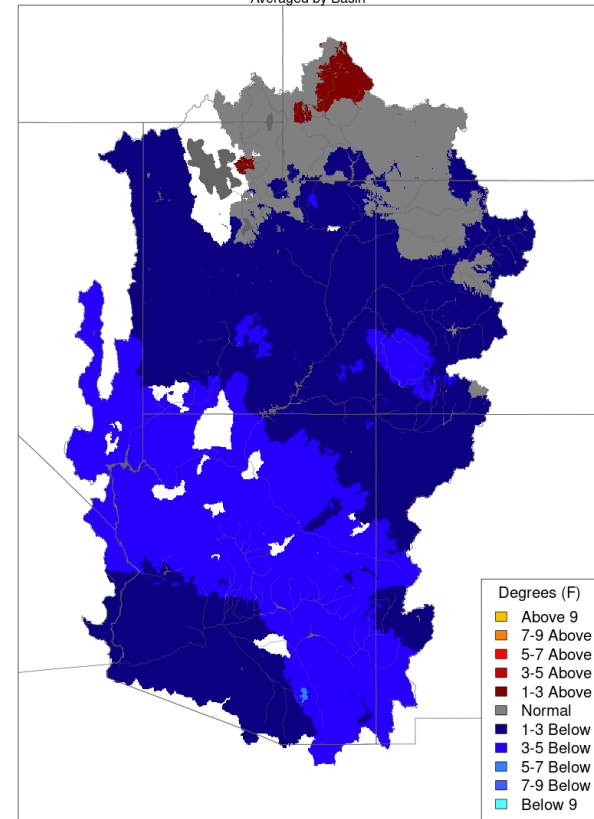
Precipitation and Temperature

Monthly Precipitation - March 2021
Averaged by Basin



Prepared by NOAA, Colorado Basin River Forecast Center
Salt Lake City, Utah, www.cbrfc.noaa.gov

Max Temp - Monthly Deviation - March 2021
Averaged by Basin

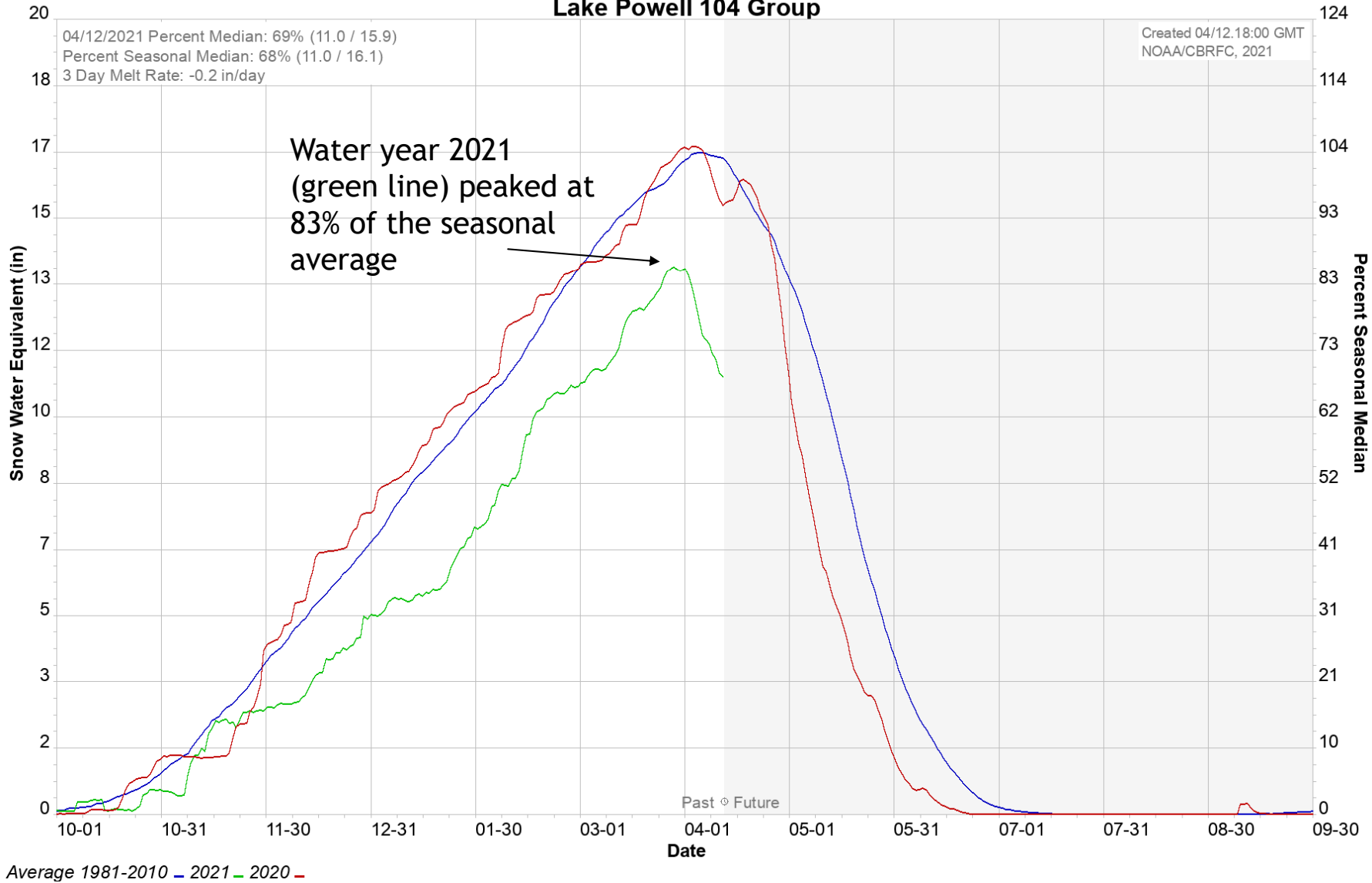


Prepared by NOAA, Colorado Basin River Forecast Center
Salt Lake City, Utah, www.cbrfc.noaa.gov

Above Lake Powell March precipitation: 91%
Above Lake Powell water year 2021 cumulative precipitation: 77%



Colorado Basin River Forecast Center Lake Powell 104 Group





Unregulated Inflow, Current and Projected Reservoir Status

Projected unregulated inflow to Lake Powell Acre-Feet % Average

| | | |
|----------------------|-----------|-----|
| Water Year 2021 | 4,897,000 | 45% |
| April thru July 2021 | 3,200,000 | 45% |

| Reservoir | Current Elevation | Current Storage Acre-Feet | Current % Capacity | Projected Elevation on 1/1/2022 ¹ |
|-------------|-------------------|---------------------------|--------------------|--|
| Lake Mead | 1,084.0 | 10,346,000 | 40% | 1,068.5 |
| Lake Powell | 3,566.2 | 8,799,000 | 36% | 3,550.9 |

Data retrieved April 5, 2021

¹ Based on Reclamation's March 2020 24 Month Study Most Probable Inflow.



Water Use In Southern Nevada

| Southern Nevada Water Use | 2020 Actual Use in Acre-Feet ¹ |
|---|---|
| Nevada Annual Allocation | 300,000 |
| Diversion | 478,969 |
| Return Flows | 223,401 |
| Consumptive Use | 255,568 |
| Unused Allocation Available for Banking | 44,432 (15%) |

| Southern Nevada Water Use | Diversions | Return Flows | Consumptive Use |
|---------------------------|------------|--------------|-----------------|
| January - February 2021 | 54,961 | 35,673 | 19,288 |

| Banked Water (through end of 2020) ¹ | Acre-Feet |
|---|------------------|
| Ground Water Recharge in So. Nevada | 357,643 |
| Banked in Lake Mead | 865,741 |
| Banked in California and Arizona | 944,071 |
| Total | 2,167,455 |

¹ Water accounting totals for 2020 are provisional.