

Colorado River Commission of Nevada

Natural Resources Group Hydrologic Update October 13, 2015



Unregulated Inflow Into Lake Powell

As of October 5, 2015

	MAF*	% Avg**
• WY 2015 (observed):	10.17	94%
• April-July 2015 (observed):	6.71	94%
• September (observed):	0.28	68%
• October (forecasted):	0.35	68%

*MAF=Million Acre-Feet

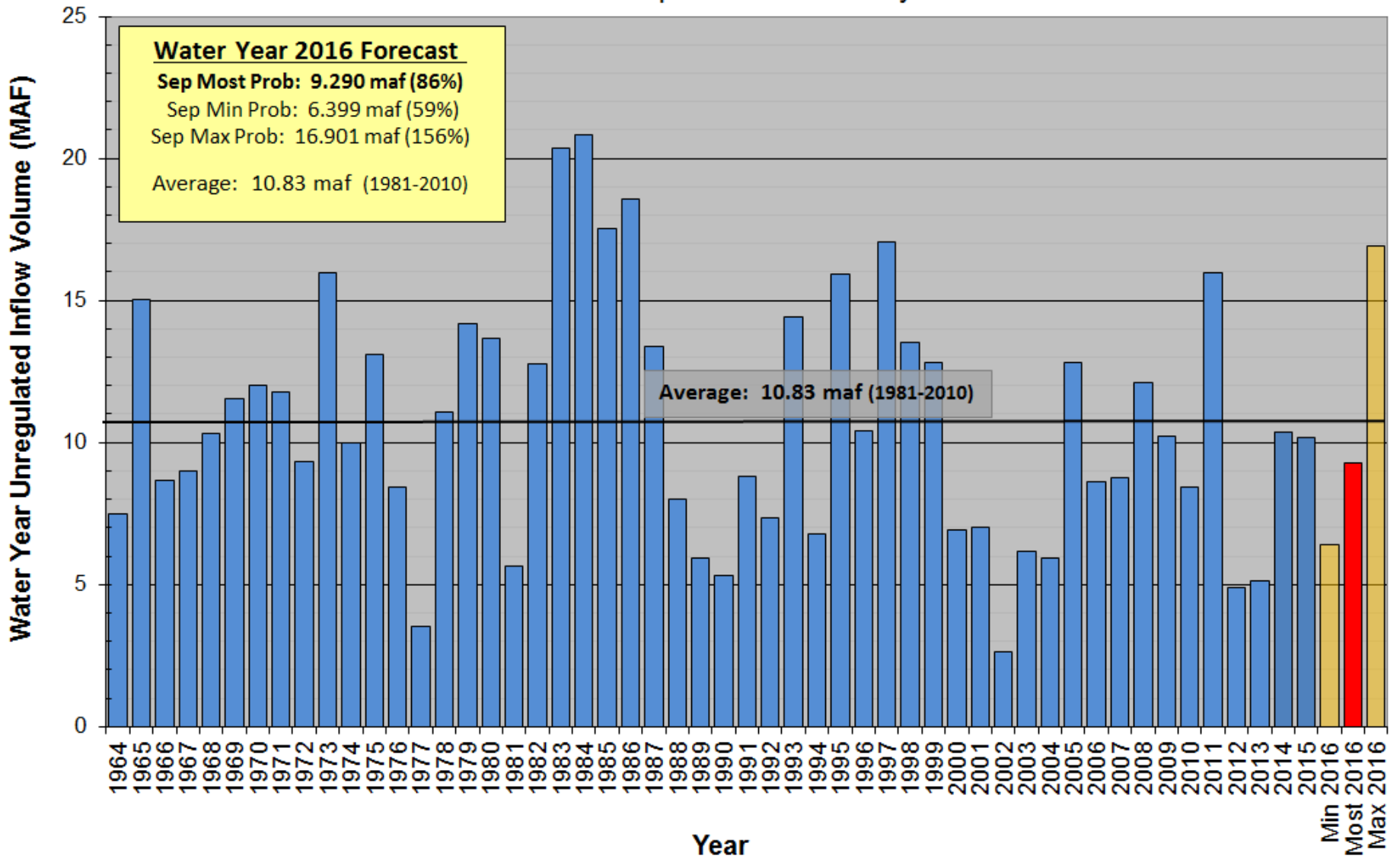
**30-year average, from 1981-2010 (current normal)



Lake Powell Unregulated Inflow

Water Year 2016 Forecast

Comparison with History



Storage Conditions

As of October 5, 2015

		<u>Percent of Capacity</u>	<u>Δ from last year</u>
Lake Mead elev.	1078.38 ft	38%	↓ 3.28 ft
Lake Powell elev.	3,605.72 ft	51%	↓ .32 ft
Total System Storage (10/2015)	30.25 maf	51%	↑ 0.16 maf
Total System Storage (10/2014)	30.09 maf	50%	



Reservoir Storage

As of October 11, 2015

Colorado River Reservoir Storages

Basin	Reservoir	Max Storage	*Current Storage	Percentage	Current Storage subtotals
Upper Basin	Crystal Reservoir	17,356	16,051	92%	5,878,033
	Flaming Gorge	3,749,000	3,427,241	91%	
	Fontenelle	344,800	247,759	72%	
	Morrow Point	117,190	100,468	86%	
	Blue Mesa	829,500	701,922	85%	
	Navajo	1,696,000	1,384,592	82%	
	Lake Powell	24,322,000	12,355,552	51%	
Lower Basin	Lake Mead	26,120,000	9,883,000	38%	2,130,100
	Lake Mohave	1,809,800	1,569,200	87%	
	Lake Havasu	619,400	560,900	91%	
	TOTAL	59,625,046	30,246,685	51%	

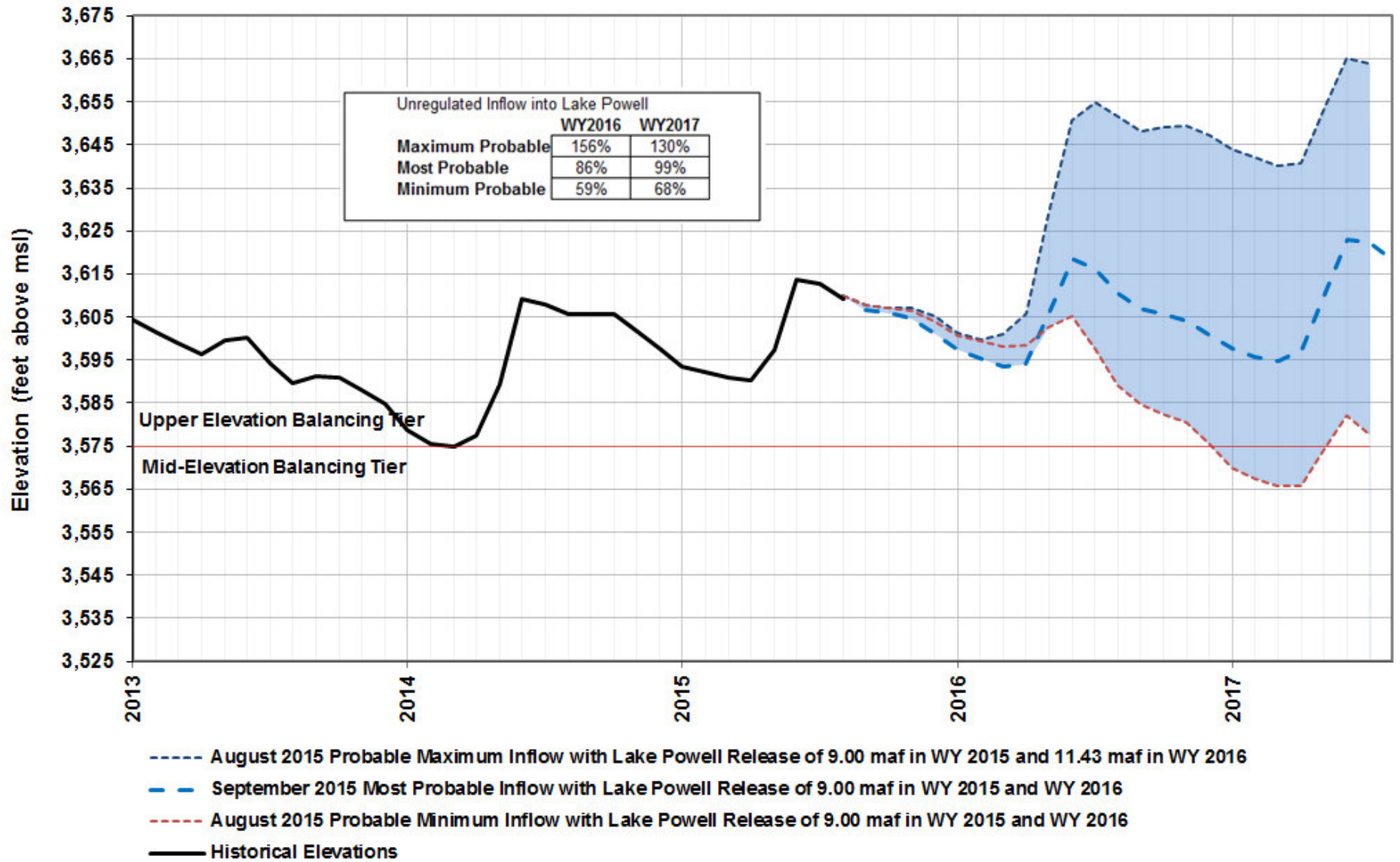
*Data current as 10/11/2015

<http://www.usbr.gov/lc/region/g4000/hourly/levels.html>

<http://www.usbr.gov/uc/water/rsvrs/ops/r40day.html>

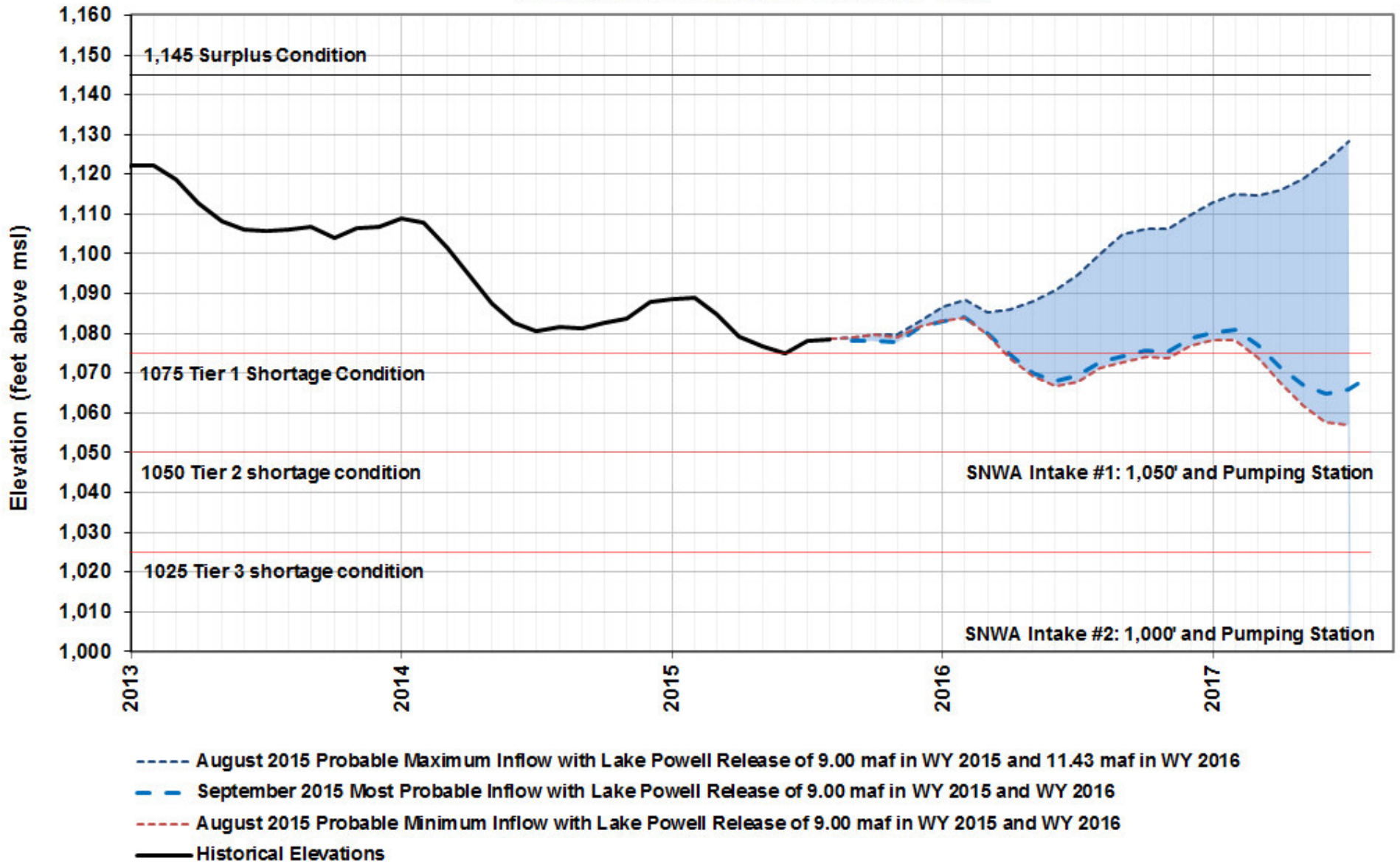
Lake Powell Projections

Reclamation's September 24-Month Study



Lake Mead Projections

Reclamation's September 24-Month Study



U.S. Drought Monitor






West

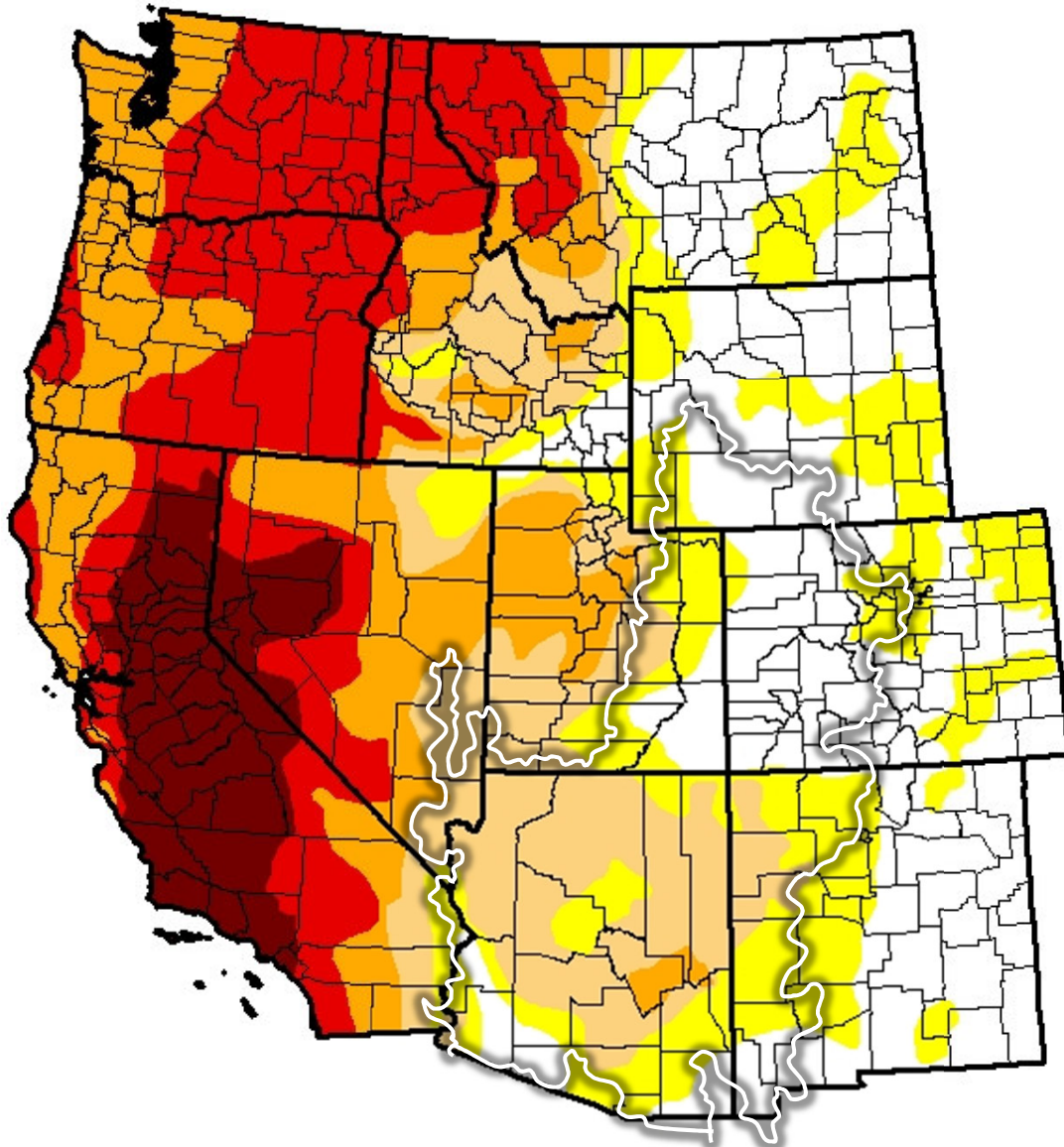
October 6, 2015

(Released Thursday, Oct. 8, 2015)

Valid 8 a.m. EDT

Intensity:

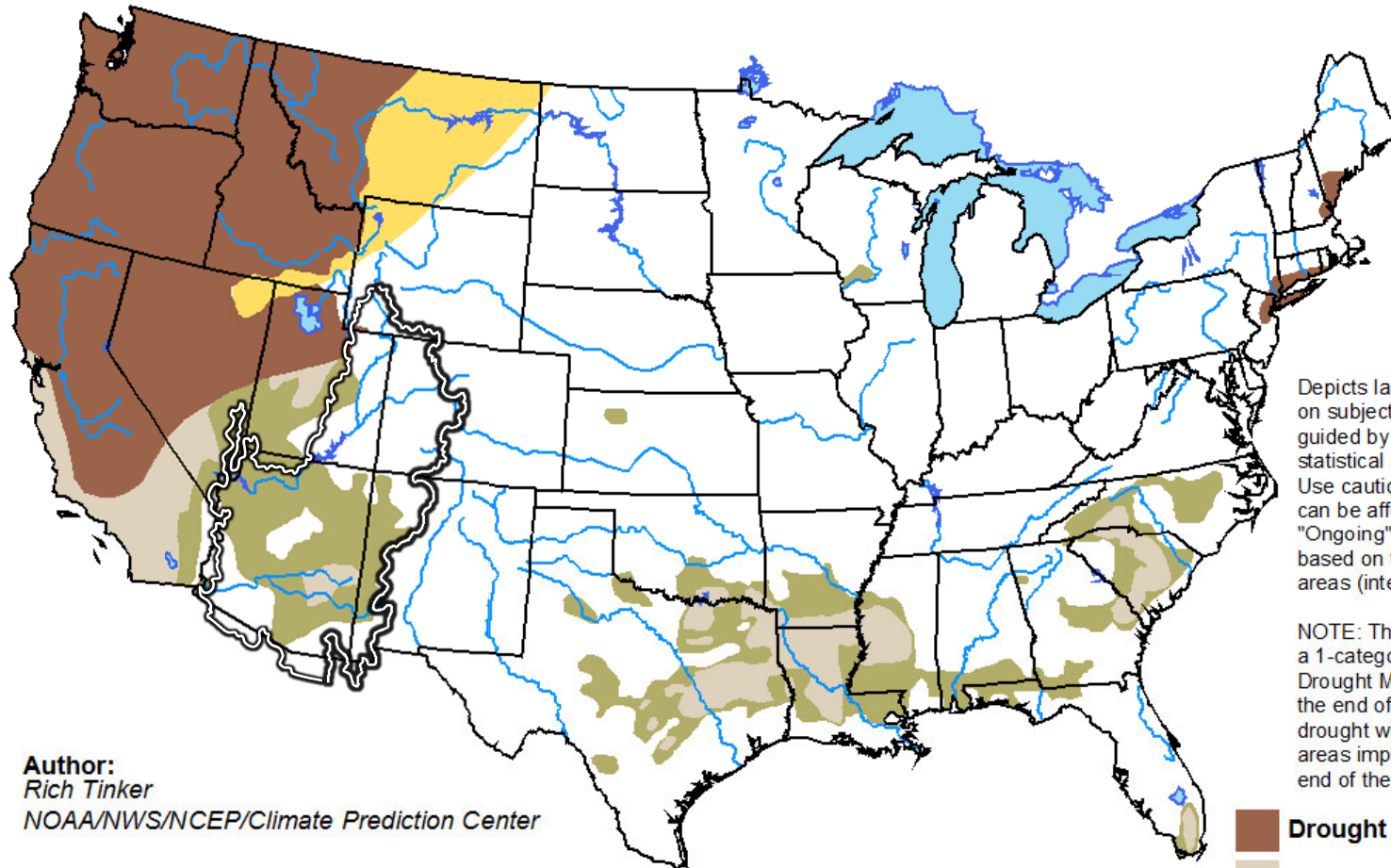
-  D0 - Abnormally Dry
-  D1 - Moderate Drought
-  D2 - Severe Drought
-  D3 - Extreme Drought
-  D4 - Exceptional Drought



U.S. Seasonal Drought Outlook valid for September 17 - December 31, 2015

Drought Tendency During the Valid Period

Released September 17, 2015

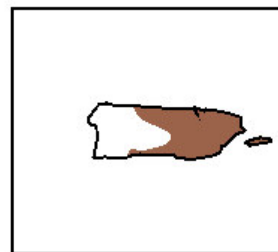
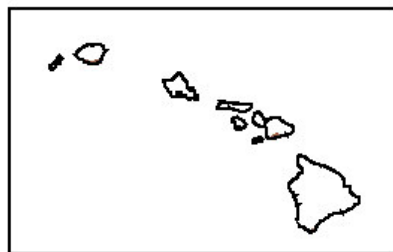
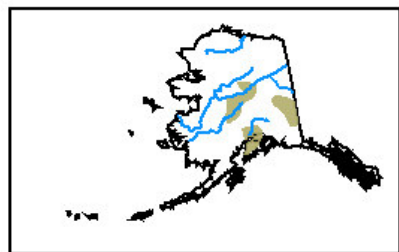


Depicts large-scale trends based on subjectively derived probabilities guided by short- and long-range statistical and dynamical forecasts. Use caution for applications that can be affected by short lived events. "Ongoing" drought areas are based on the U.S. Drought Monitor areas (intensities of D1 to D4).

NOTE: The tan areas imply at least a 1-category improvement in the Drought Monitor intensity levels by the end of the period, although drought will remain. The green areas imply drought removal by the end of the period (D0 or none).

Author:
 Rich Tinker
 NOAA/NWS/NCEP/Climate Prediction Center

- Drought persists/intensifies
- Drought remains but improves
- Drought removal likely
- Drought development likely



<http://go.usa.gov/3eZ73>

Precipitation – Colorado River Basin

As of October 5, 2015

Upper Colorado Basin

WY Precip to Date

60% (.2")

Current Basin Snowpack

NA

(Avg 1981-2010)

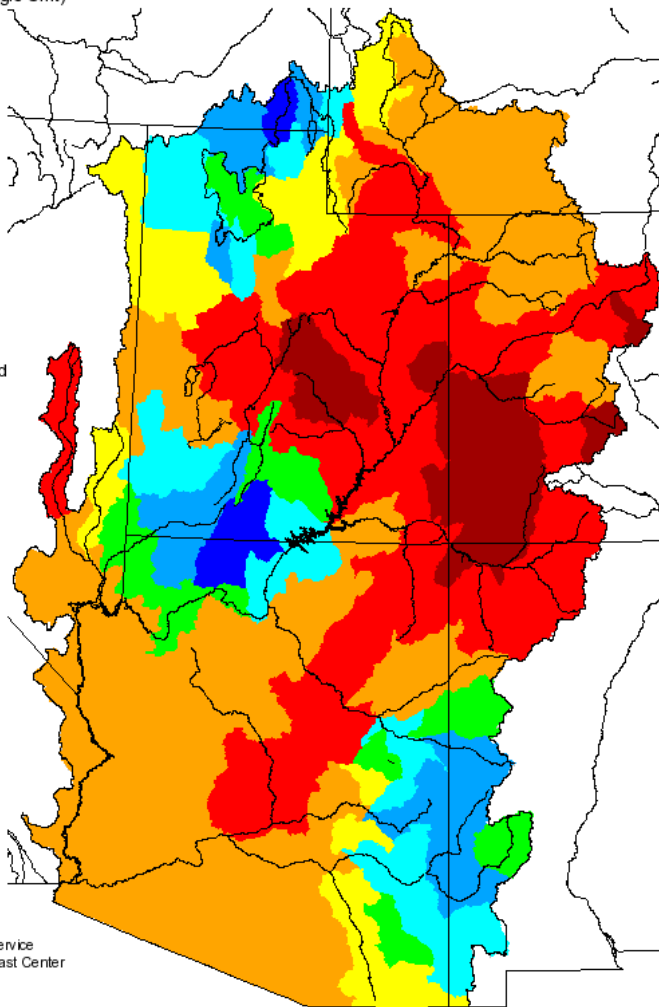
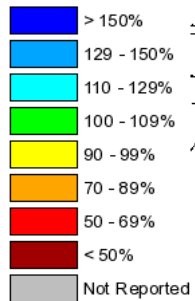


Precipitation

Monthly Precipitation for September 2015

(Averaged by Hydrologic Unit)

% Average

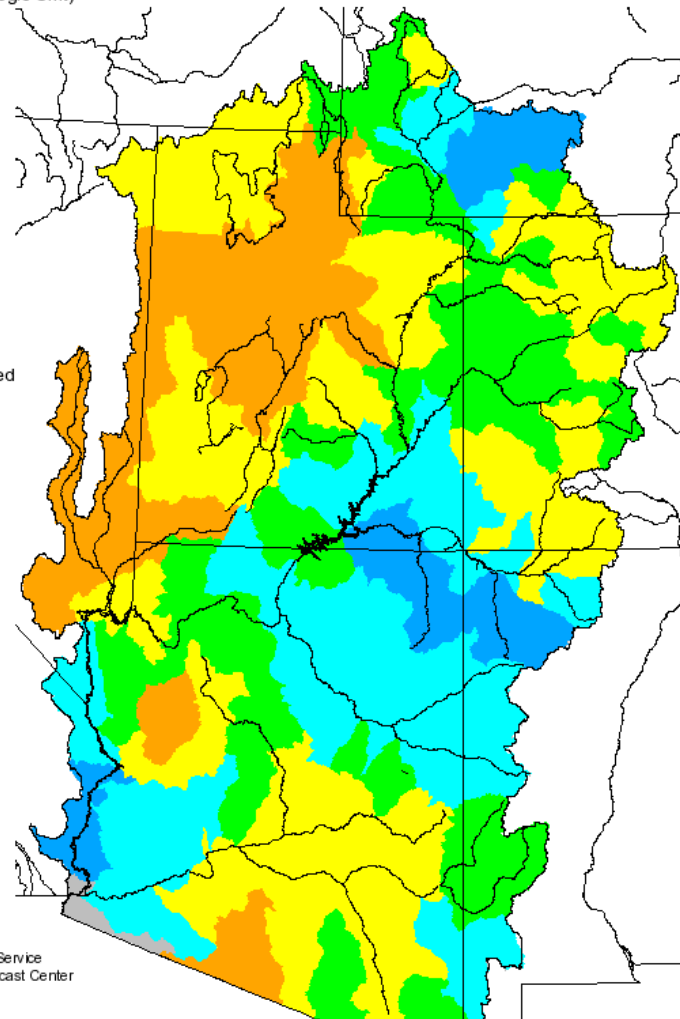
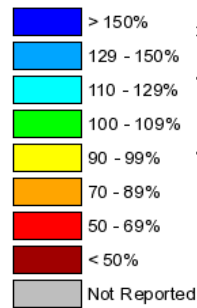


Prepared by
NOAA, National Weather Service
Colorado Basin River Forecast Center
Salt Lake City, Utah
www.cbafc.noaa.gov

Seasonal Precipitation, October 2014 - September 2015

(Averaged by Hydrologic Unit)

% Average

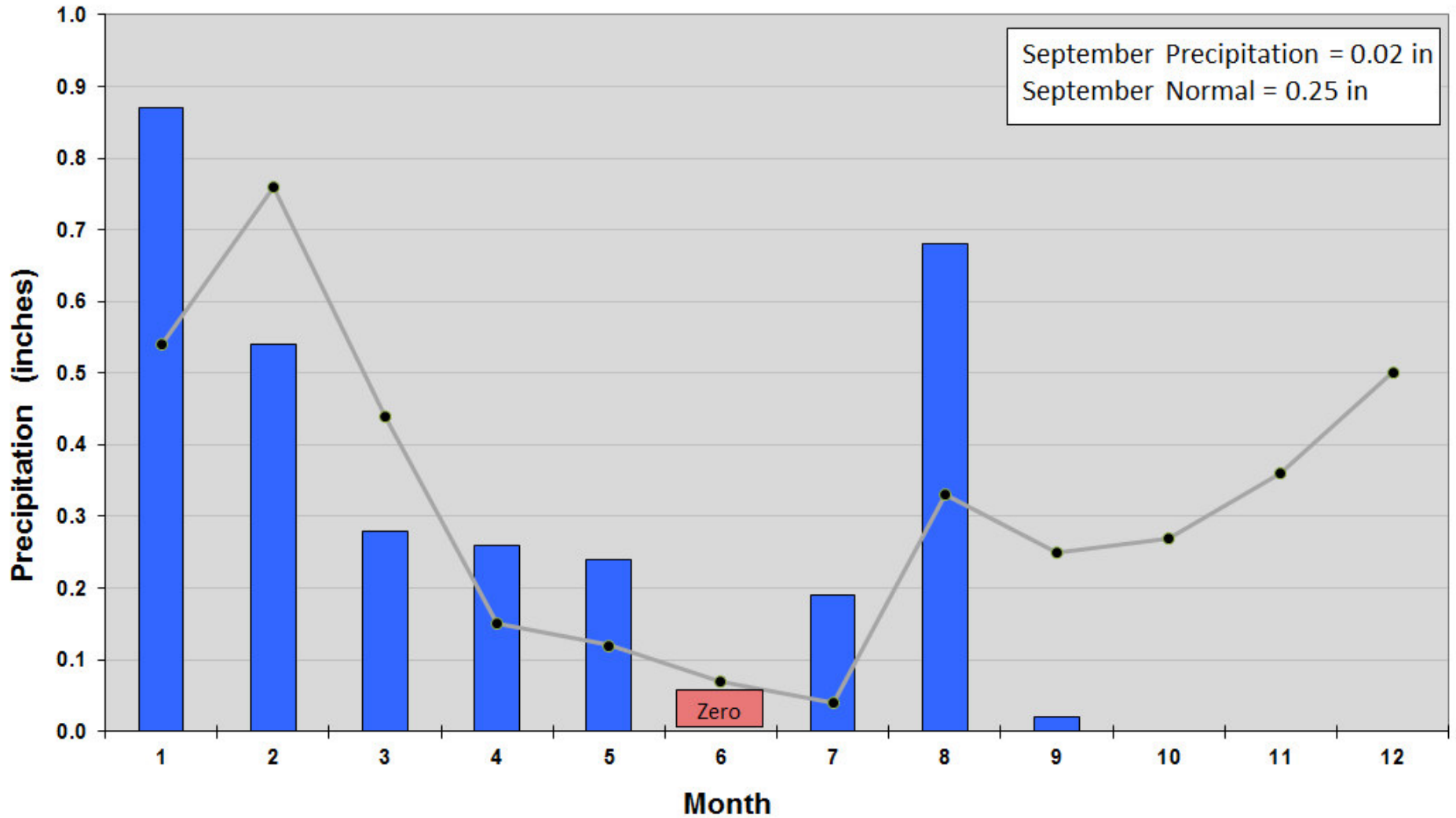


Prepared by
NOAA, National Weather Service
Colorado Basin River Forecast Center
Salt Lake City, Utah
www.cbafc.noaa.gov

Monthly Precipitation at McCarran International Airport, Las Vegas, NV

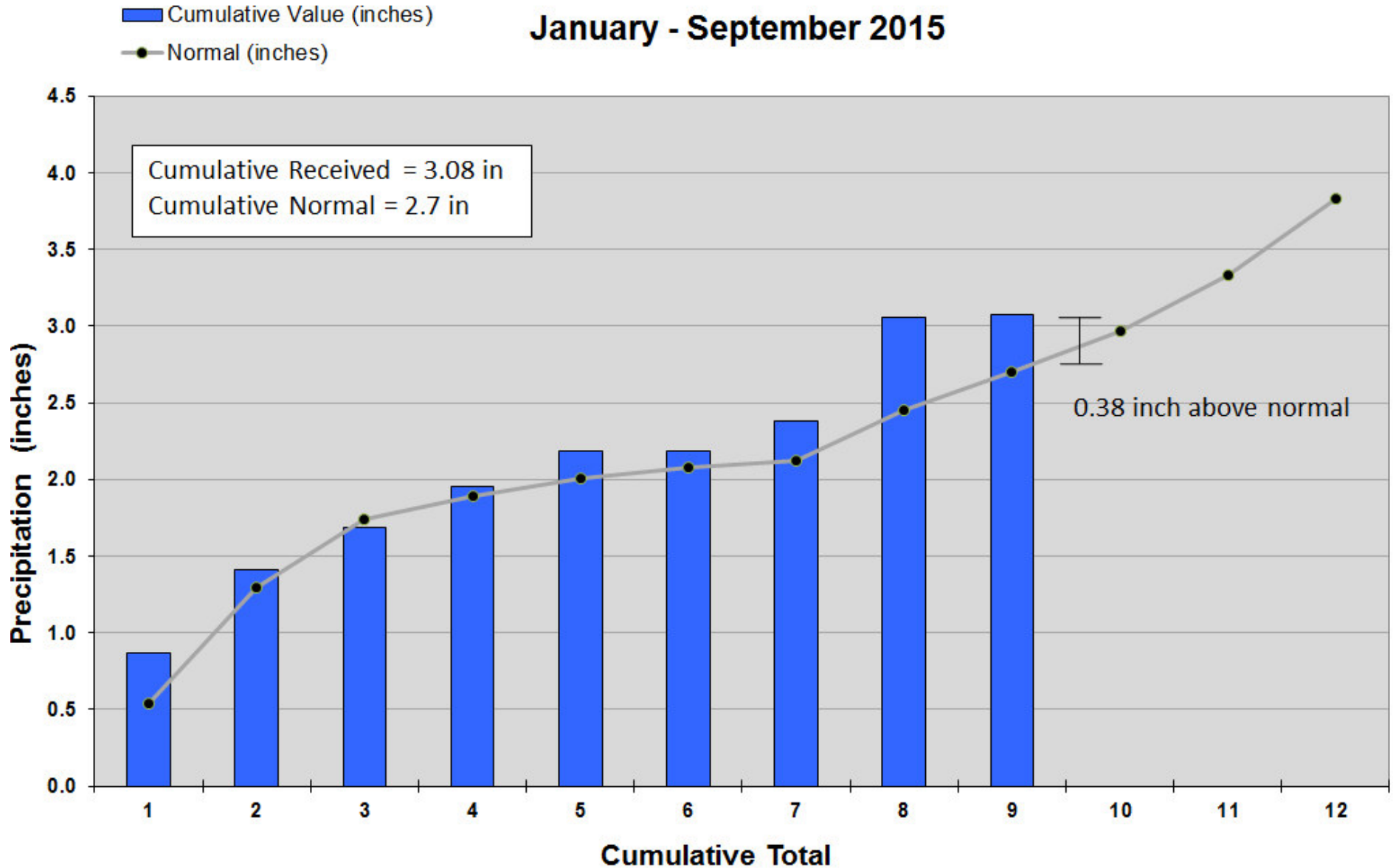
Recorded Value (inches)
Normal (inches)

January - September 2015



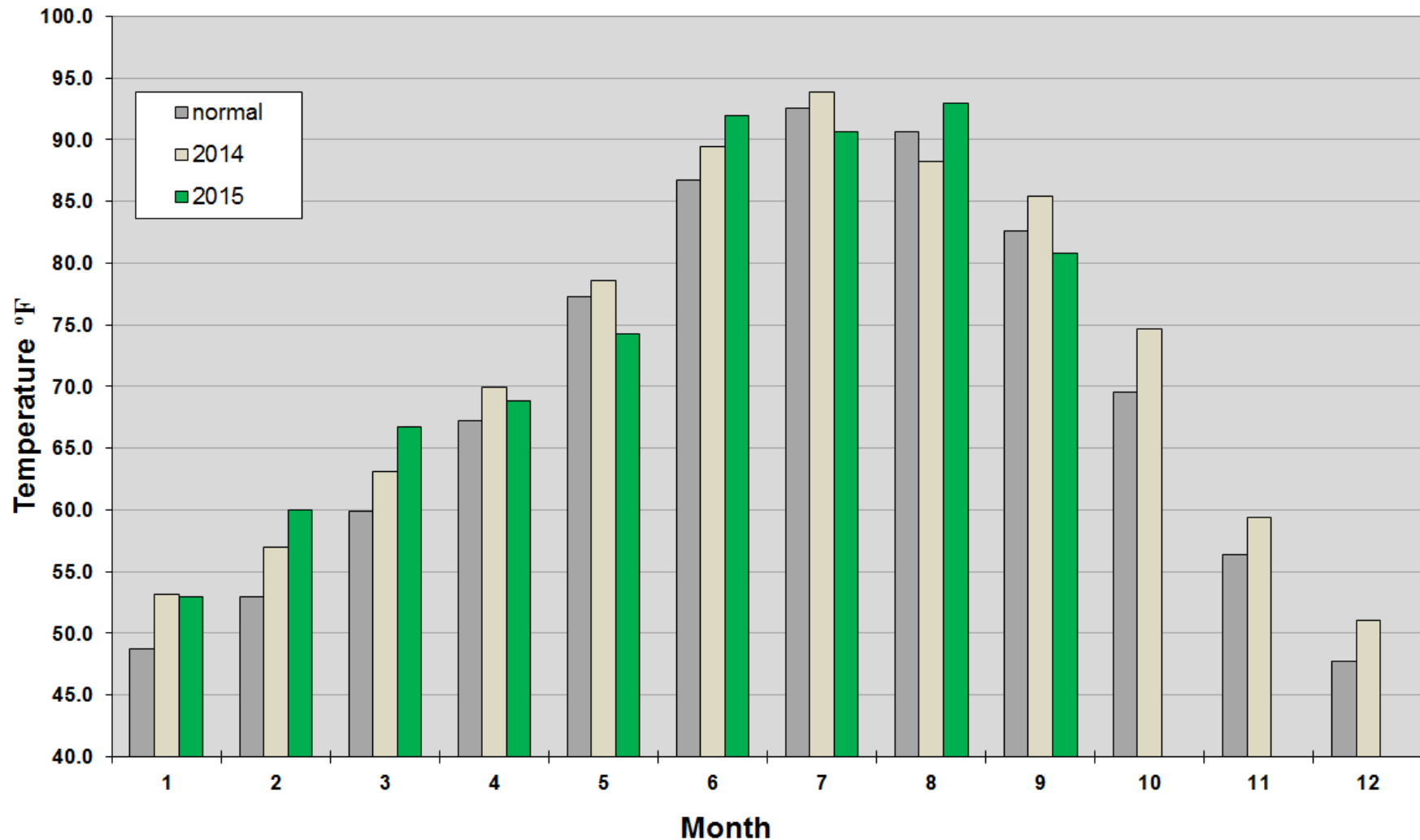
Cumulative Precipitation at McCarran International Airport, Las Vegas, NV

January - September 2015



Las Vegas Average Temperature

Average Monthly Temperature at McCarran Airport, Las Vegas, NV



Water Use in Southern Nevada



Water Use in Southern Nevada

January – August 2015

2015*: Consumptive Use = 156,757 af

2014: Consumptive Use = 160,827 af

Difference = -4,070 af

*Subject to final accounting.



Colorado River Commission of Nevada

Questions?

Warren Turkett
wturkett@crc.nv.gov

