



Colorado River Commission of Nevada

Hydrology and Water Use Update

Warren Turkett

April 13, 2021





Summary

Lake Powell

- Drought conditions are causing below average inflow forecasts.
- Unregulated inflow for water year¹ 2021 is forecasted at 45% of average.
- Upper Basin snowpack peaked at 83% of the seasonal average.

Lake Mead

- Lake Mead is forecasted to decrease about 16 feet in elevation by the end of calendar year 2021.
- Lower Basin conservation programs have conserved roughly 3.5 million af or about 40 addition feet in Lake Mead.

Nevada Water Supply

- Southern Nevada has about 9 years of water supply banked. ²
- **In 2020, Southern Nevada used 15% less than its annual allocation.**

Storage	Elevation (f)	% Capacity	Change since last year
Lake Mead	1,084.0	40%	-14.1 ft
Lake Powell	3,566.2	36%	-34.3 ft

Data retrieved April 5, 2021

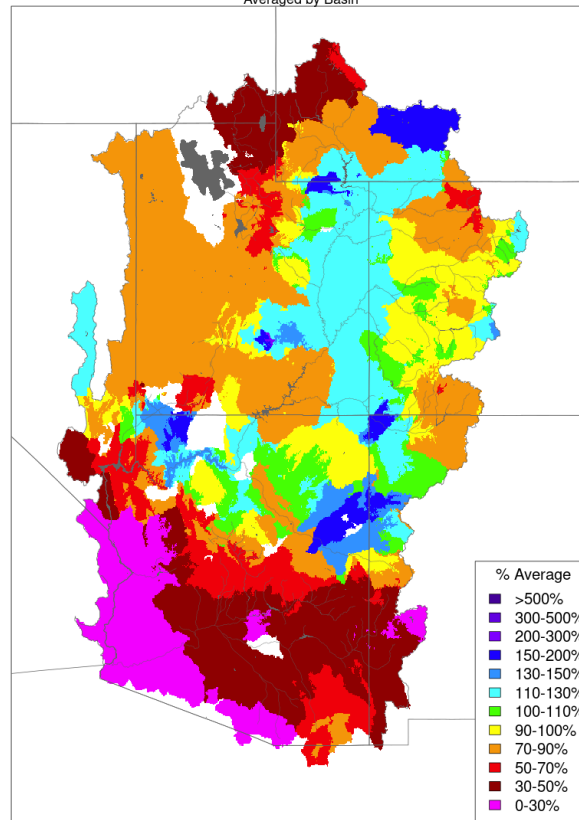
¹ Water year is defined as October through September.

² Based on 2020 consumptive use and storage volumes through 2020.



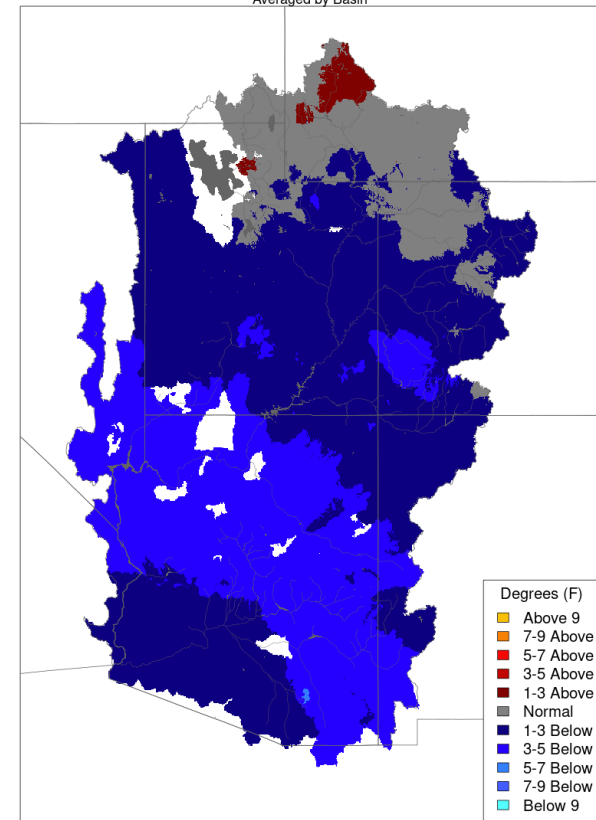
Precipitation and Temperature

Monthly Precipitation - March 2021
Averaged by Basin



Prepared by NOAA, Colorado Basin River Forecast Center
Salt Lake City, Utah, www.cbrfc.noaa.gov

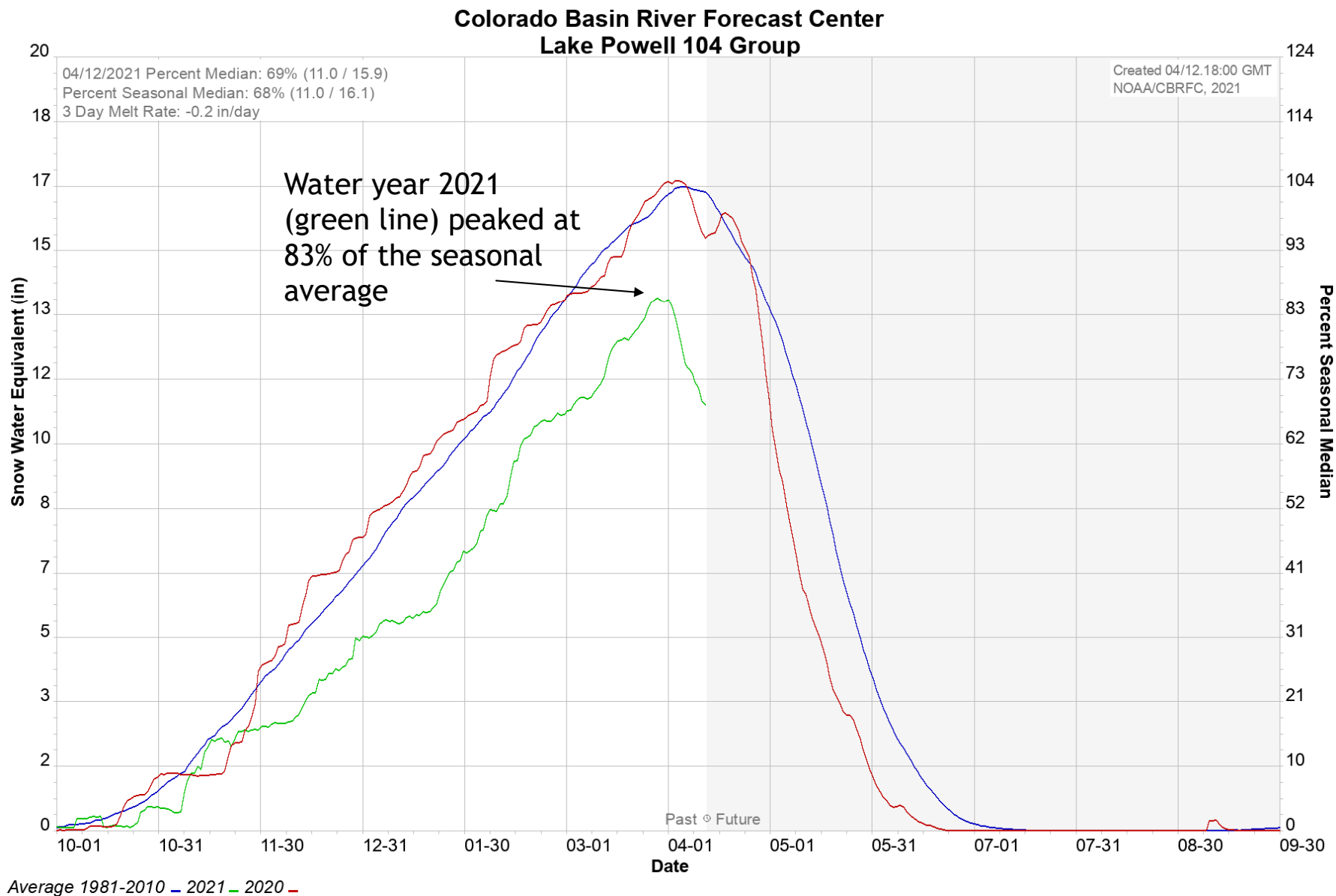
Max Temp - Monthly Deviation - March 2021
Averaged by Basin



Prepared by NOAA, Colorado Basin River Forecast Center
Salt Lake City, Utah, www.cbrfc.noaa.gov

Above Lake Powell March precipitation: 91%

Above Lake Powell water year 2021 cumulative precipitation: 77%





Unregulated Inflow, Current and Projected Reservoir Status

Projected unregulated inflow to Lake Powell	Acre-Feet	% Average
Water Year 2021	4,897,000	45%
April thru July 2021	3,200,000	45%

Reservoir	Current Elevation	Current Storage Acre-Feet	Current % Capacity	Projected Elevation on 1/1/2022 ¹
Lake Mead	1,084.0	10,346,000	40%	1,068.5
Lake Powell	3,566.2	8,799,000	36%	3,550.9

Data retrieved April 5, 2021

¹ Based on Reclamation's March 2020 24 Month Study Most Probable Inflow.



Water Use In Southern Nevada

Southern Nevada Water Use

2020 Actual Use in Acre-Feet ¹

Nevada Annual Allocation	300,000
Diversion	478,969
Return Flows	223,401
Consumptive Use	255,568
Unused Allocation Available for Banking	44,432 (15%)

Southern Nevada Water Use

Diversions

Return Flows

Consumptive Use

January - February 2021	54,961	35,673	19,288
-------------------------	--------	--------	--------

Banked Water (through end of 2020)¹

Acre-Feet

Ground Water Recharge in So. Nevada	357,643
Banked in Lake Mead	865,741
Banked in California and Arizona	944,071
Total	2,167,455

¹ Water accounting totals for 2020 are provisional.