

Colorado River Commission of Nevada

Hydrology and Water Use Update

Warren Turkett

September 15, 2020





Summary

Lake Powell

- Last month was one of the driest Augusts in recent history.
- Water Year 2020 unregulated inflow is forecasted at 55% of average.

Lake Mead

- Reclamation announced that next year Lake Powell will release 8.23 maf with a possible April balancing release up to 9.0 maf and Lake Mead will be operated in Tier Zero with a required DCP contribution of 8,000 af for Nevada.
- Reclamation has essential staff continuing to operate the reservoirs water releases and hydropower generation.

Nevada Water Supply

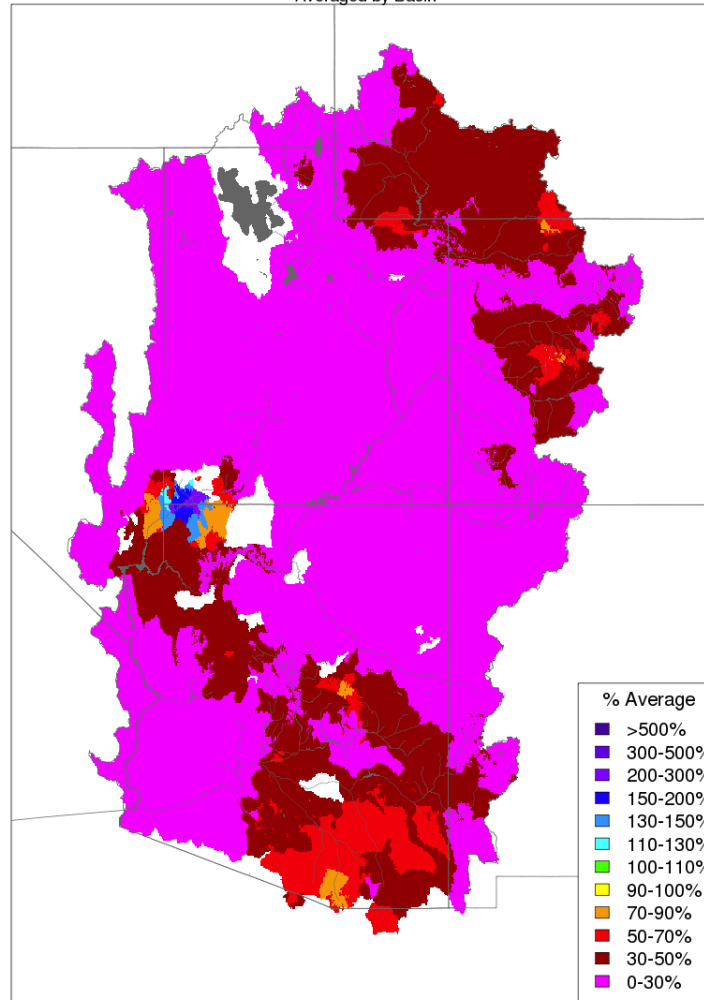
- Southern Nevada has 9 years of water supply banked. ¹
- **In 2019, Southern Nevada used 22% less than its annual allocation.**

Storage	Elevation (f)	% Capacity	Change since last year
Lake Mead	1,083.8	40%	-2.8 ft
Lake Powell	3,597.9	48%	-12.2 ft

Data retrieved September 14, 2020
¹ Based on historical Southern Nevada water use.

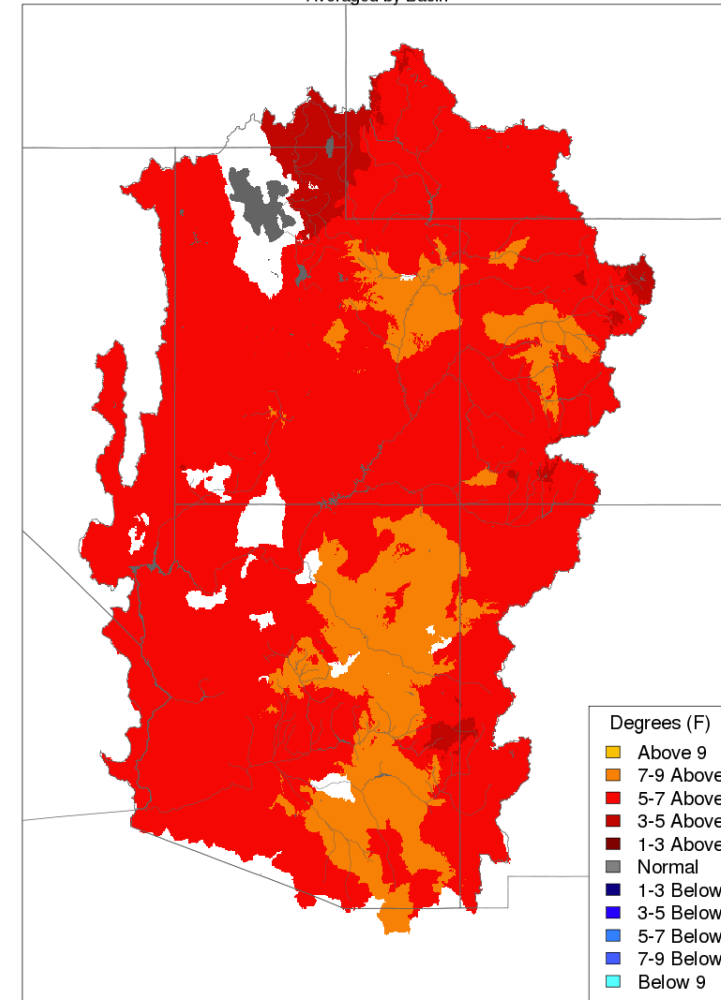
Precipitation and Temperature

Monthly Precipitation - August 2020
Averaged by Basin



Prepared by NOAA, Colorado Basin River Forecast Center
Salt Lake City, Utah, www.cbrfc.noaa.gov

Max Temp - Monthly Deviation - August 2020
Averaged by Basin



Prepared by NOAA, Colorado Basin River Forecast Center
Salt Lake City, Utah, www.cbrfc.noaa.gov

Above Lake Powell August precipitation: 31%

Above Lake Powell water year 2020 cumulative precipitation: 78%



Unregulated Inflow, Current and Projected Reservoir Status

Projected unregulated inflow to Lake Powell	Acre-Feet	% Average
Water Year 2020	6,011,000	55%
April thru July 2020	3,758,000	52%

Reservoir	Current Elevation	Current Storage Acre-Feet	Current % Capacity	Projected Elevation on 1/1/2021 ¹
Lake Mead	1,083.8	10,332,000	40%	1,085.2
Lake Powell	3,597.9	11,554,000	48%	3,587.6

Data retrieved September 14, 2020

¹ Based on Reclamation's September 2020 24 Month Study Most Probable Inflow.

Water Use In Southern Nevada

Southern Nevada Water Use

2019 Actual Use in Acre-Feet

Nevada Annual Allocation	300,000
Diversion	472,314
Return Flows	238,318
Consumptive Use	233,996
Unused Allocation Available for Banking	66,004 (22%)

Southern Nevada Water Use

Diversions

Return Flows

Consumptive Use

January-July 2020	279,551	130,654	148,897
-------------------	---------	---------	---------

Banked Water (through end of 2019)

Acre-Feet

Ground Water Recharge in So. Nevada	358,315
Banked in Lake Mead	785,913
Banked in California and Arizona	944,071
Total	2,088,299