

Colorado River Commission of Nevada





Natural Resources Group Hydrologic Update May 9, 2017



Unregulated Inflow & Storage

As of May 8, 2017

Projected unregulated inflow to Lake Powell	MAF*	% Avg**
WY 2017 (Forecast):	12.9	119%
April-July 2017 (Forecast):	8.8	123%

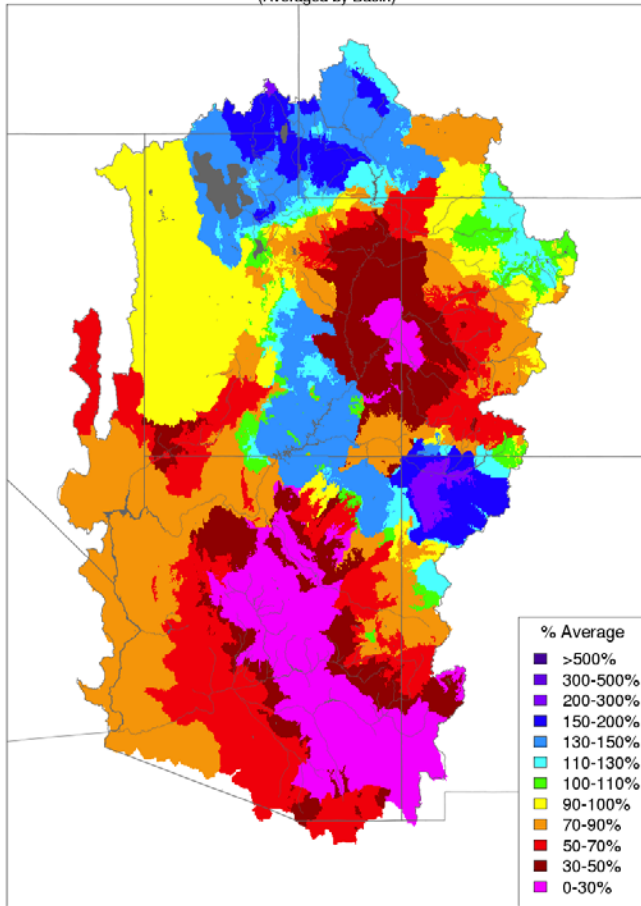
Storage	Elevation (f)	MAF*	% Capacity		Δ year
Lake Mead	1,084.4	10.4	40%		8.9 ft
Lake Powell	3,605.8	12.3	51%		13.0 ft
Combined storage		30.5	51%		1.8 maf

*MAF=Million Acre-Feet

**30-year average, from 1981-2010 (current normal)

Precipitation

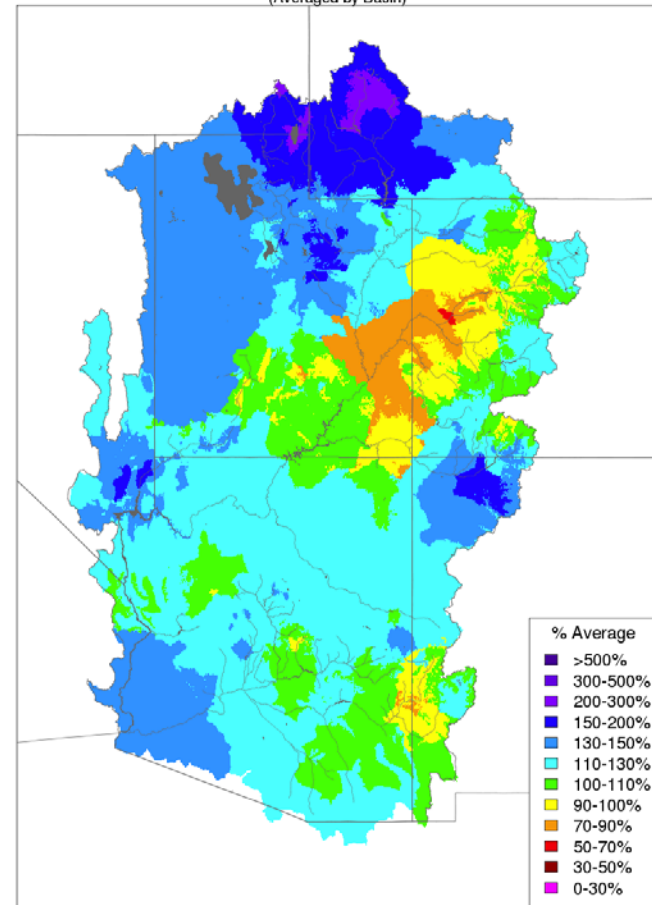
Monthly Precipitation - April 2017
(Averaged by Basin)



Prepared by NOAA, Colorado Basin River Forecast Center
Salt Lake City, Utah, www.cbrfc.noaa.gov

Above Lake Powell
April precipitation: 90%

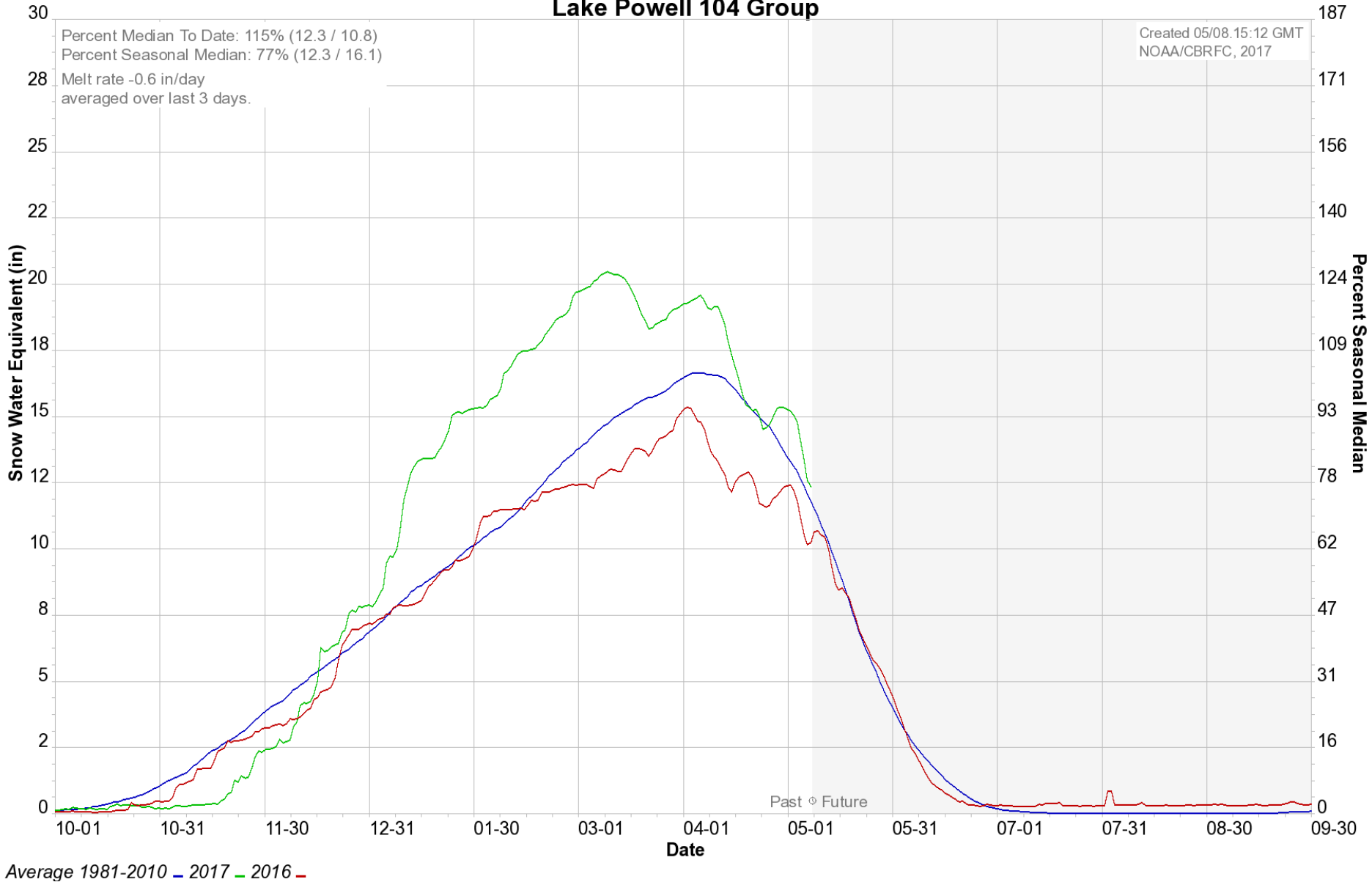
Water Year Precipitation, October 2016 - April 2017
(Averaged by Basin)



Prepared by NOAA, Colorado Basin River Forecast Center
Salt Lake City, Utah, www.cbrfc.noaa.gov

Above Lake Powell
WY Precipitation to date: 117%

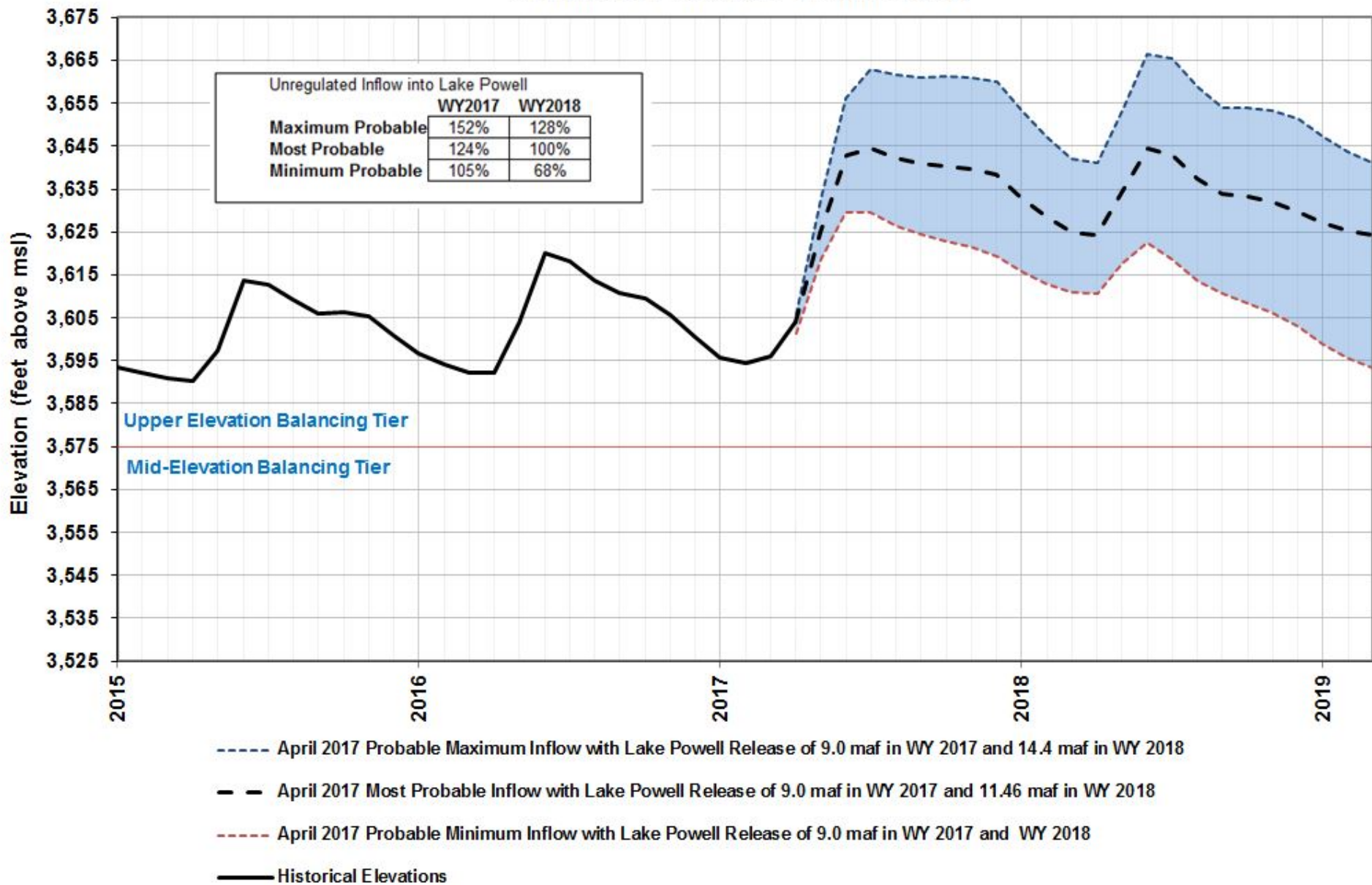
Colorado Basin River Forecast Center Lake Powell 104 Group



Current basin snowpack: 104% (12")

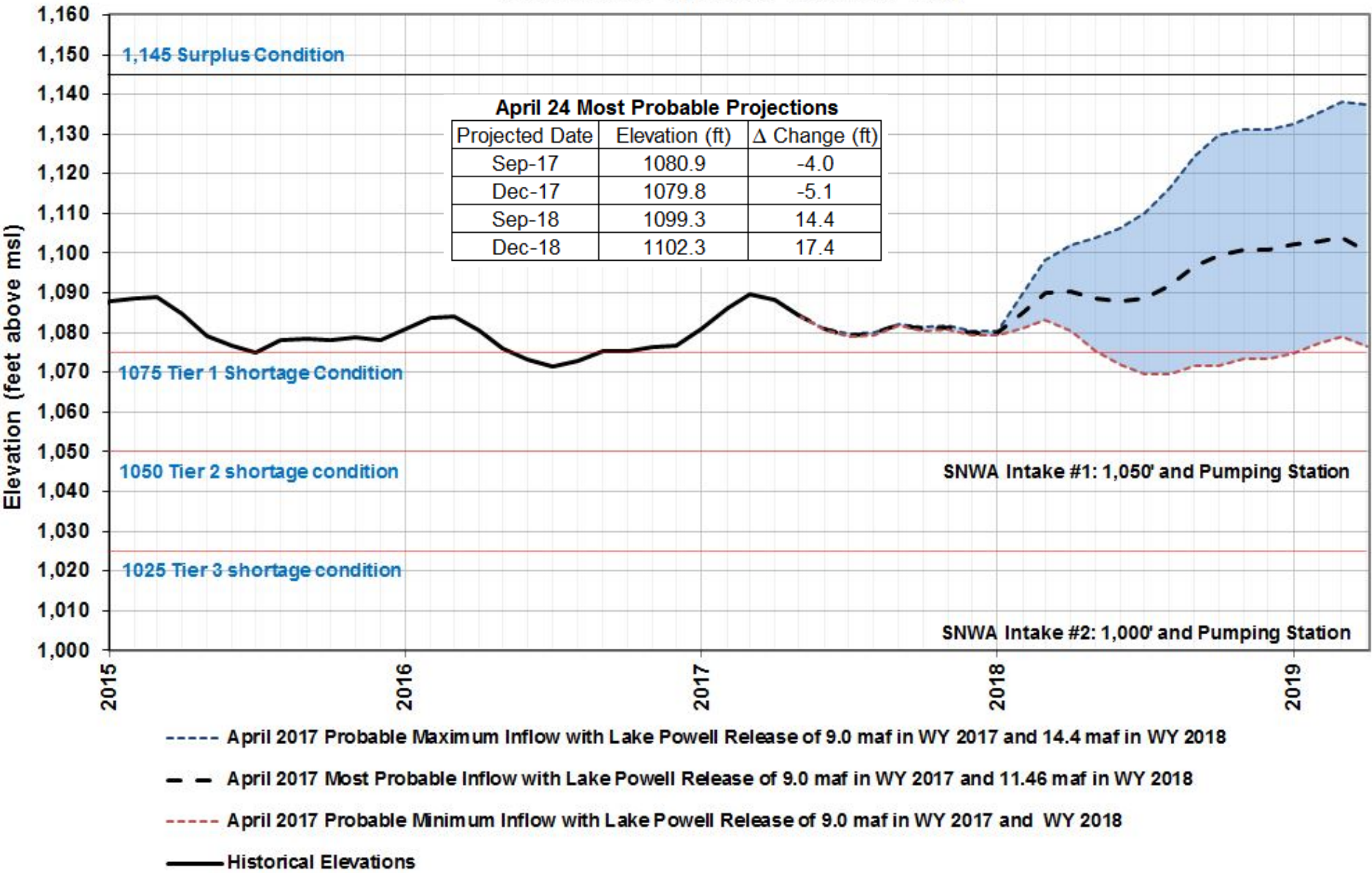
Lake Powell Projections

Reclamation's April 2017 24-Month Study



Lake Mead Projections

Reclamation's April 2017 24-Month Study



April 2017 CRSS Results

Results from April 2017 CRSS Run
(Values in percent of traces)

Probability of Occurrence	2018	2019	2020	2021	2022
Shortage 1st Level (Mead \leq 1,075 and \geq 1,050)	0	31	31	26	27
Shortage 2nd Level (Mead $<$ 1,050 and \geq 1,025)	0	0	1	8	9
Shortage 3rd Level (Mead $<$ 1,025)	0	0	0	$<$ 1	3
Shortage any Tier	0	31	32	34	39
Equalization Tier	45	35	34	31	32



Water Use in Southern Nevada

January- March 2017

2017: Consumptive Use = 30,828* af

2016: Consumptive Use = 36,914* af

Difference = -6,086 af

*Subject to final accounting.



Colorado River Commission of Nevada

Questions?

Warren Turkett, Ph.D.
wturkett@crc.nv.gov

