

Colorado River Commission of Nevada

Hydrology and Water Use Update

Warren Turkett

October 13, 2020



Summary

Lake Powell

- Water year² 2020 ended with 54% of average unregulated inflow.
- August and September were dry resulting in next years forecast to be below average.

Lake Mead

- Reclamation announced that next year Lake Powell will release 8.23 maf with a possible April balancing release up to 9.0 maf and Lake Mead will be operated in Tier Zero with a required DCP contribution of 8,000 af for Nevada.
- Lake Mead is forecasted to maintain elevations through the end of calendar year 2021.

Nevada Water Supply

- Southern Nevada has 9 years of water supply banked. ¹
- **In 2019, Southern Nevada used 22% less than its annual allocation.**

Storage	Elevation (f)	% Capacity	Change since last year
Lake Mead	1,083.2	39%	-0.2 ft
Lake Powell	3,595.2	47%	-19.5 ft

Data retrieved October 7, 2020

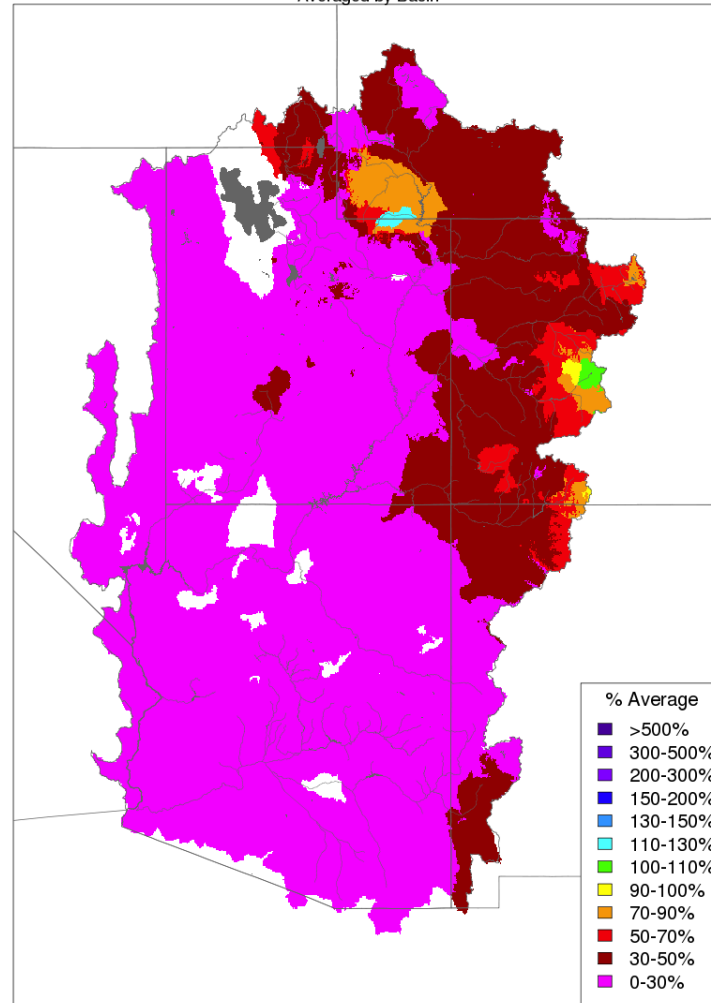
¹ Based on historical Southern Nevada water use.

² Water year is defined as October through September.

Precipitation and Temperature

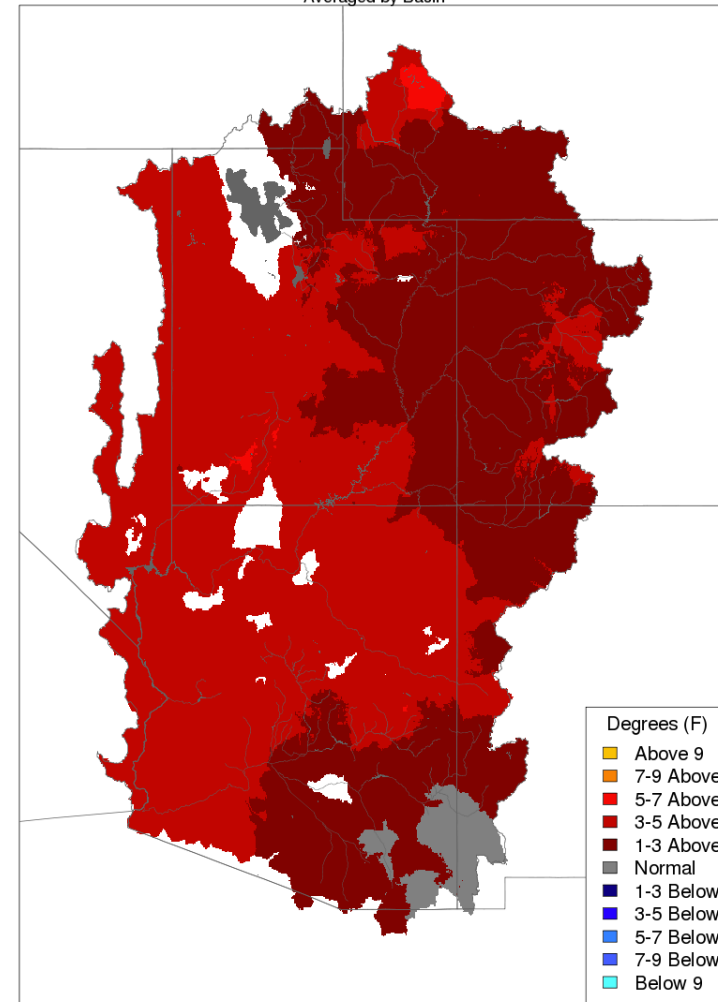


Monthly Precipitation - September 2020
Averaged by Basin



Prepared by NOAA, Colorado Basin River Forecast Center
Salt Lake City, Utah, www.cbrfc.noaa.gov

Max Temp - Monthly Deviation - September 2020
Averaged by Basin



Prepared by NOAA, Colorado Basin River Forecast Center
Salt Lake City, Utah, www.cbrfc.noaa.gov

Above Lake Powell September precipitation: 46%

Above Lake Powell water year 2020 cumulative precipitation: 75%

Unregulated Inflow, Current and Projected Reservoir Status

Projected unregulated inflow to Lake Powell Acre-Feet % Average

Water Year 2020 (observed)	5,847,000	54%
April thru July 2020 (observed)	3,758,000	52%

Reservoir	Current Elevation	Current Storage Acre-Feet	Current % Capacity	Projected Elevation on 1/1/2021 ¹
Lake Mead	1,083.2	10,274,000	39%	1,085.2
Lake Powell	3,595.2	11,293,000	47%	3,587.6

Data retrieved October 7, 2020

¹ Based on Reclamation's September 2020 24 Month Study Most Probable Inflow.

Water Use In Southern Nevada

Southern Nevada Water Use

2019 Actual Use in Acre-Feet

Nevada Annual Allocation	300,000
Diversion	472,314
Return Flows	238,318
Consumptive Use	233,996
Unused Allocation Available for Banking	66,004 (22%)

Southern Nevada Water Use

Diversions

Return Flows

Consumptive Use

January-August 2020	335,192	149,495	185,697
---------------------	---------	---------	---------

Banked Water (through end of 2019)

Acre-Feet

Ground Water Recharge in So. Nevada	358,315
Banked in Lake Mead	785,913
Banked in California and Arizona	944,071
Total	2,088,299