

Colorado River Commission of Nevada

Hydrology and Water Use Update

Warren Turkett

June 9, 2020





Summary

Lake Powell

- Upper Basin snowpack reached the seasonal average in April.
- Dry conditions in April and May have reduced the unregulated inflow forecasts.
- Water Year 2020 unregulated inflow is forecasted at 62% of average.

Lake Mead

- Based on Reclamations April 24 Month Study Lake Powell will not have a balancing release for the remainder of Water Year 2020.
- Reclamation has essential staff continuing to operate the reservoirs water releases and hydropower generation.

Nevada Water Supply

- Southern Nevada has 9 years of water supply banked. ¹
- **In 2019, Southern Nevada used 22% less than its annual allocation.**

Storage	Elevation (f)	% Capacity	Change since last year
Lake Mead	1,090.6	42%	4.5 ft
Lake Powell	3,606.5	50%	19.1 ft

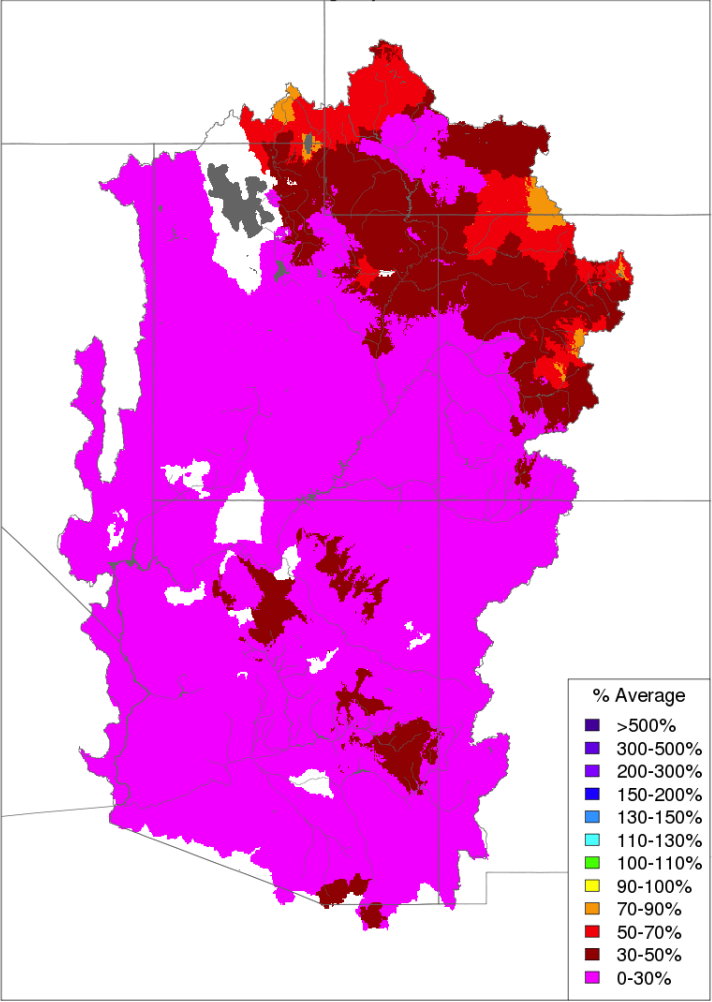
Data retrieved June 5, 2020

¹ Based on historical Southern Nevada water use.



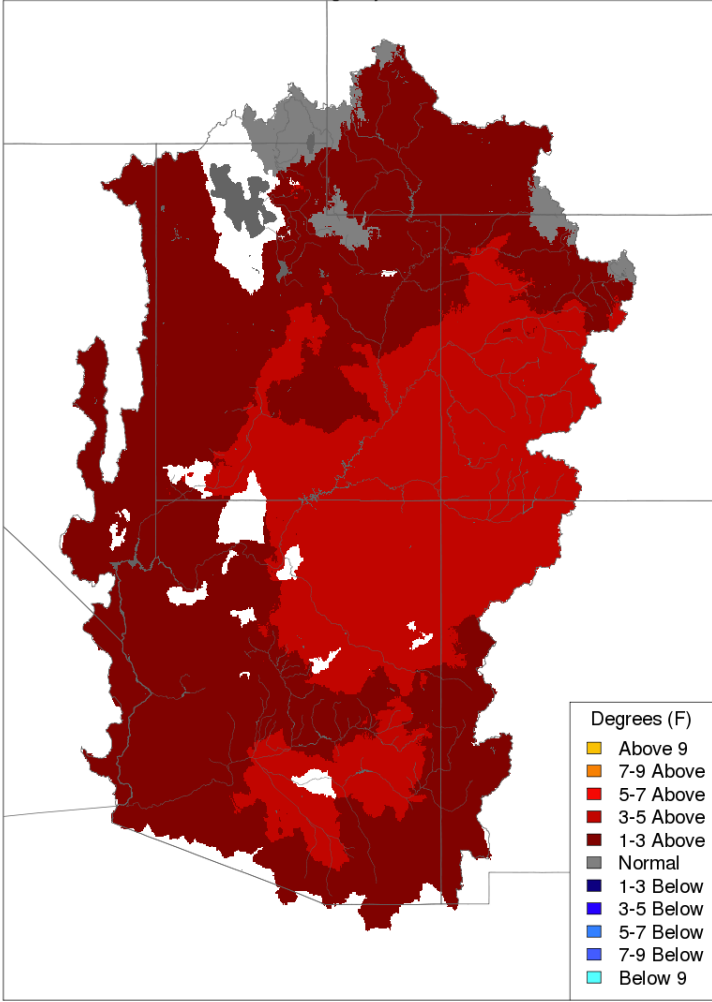
Precipitation and Temperature

Monthly Precipitation - May 2020
Averaged by Basin



Prepared by NOAA, Colorado Basin River Forecast Center
Salt Lake City, Utah, www.cbrfc.noaa.gov

Max Temp - Monthly Deviation - May 2020
Averaged by Basin

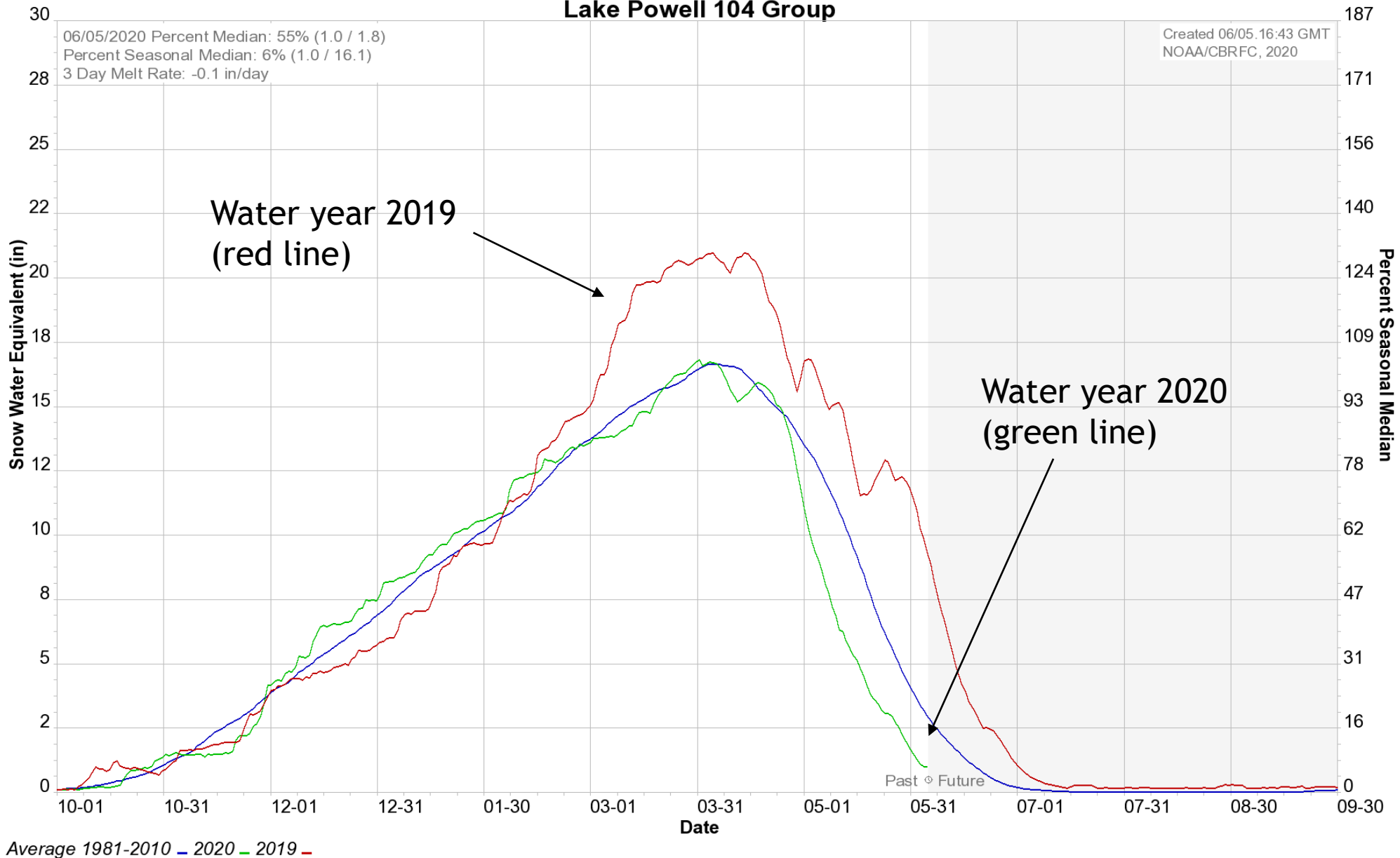


Prepared by NOAA, Colorado Basin River Forecast Center
Salt Lake City, Utah, www.cbrfc.noaa.gov

Above Lake Powell May precipitation: 42%
Above Lake Powell water year 2020 cumulative precipitation: 81%

Upper Basin Snowpack Accumulation

Colorado Basin River Forecast Center
Lake Powell 104 Group



Unregulated Inflow, Current and Projected Reservoir Status

Projected unregulated inflow to Lake Powell	Acre-Feet	% Average
Water Year 2020	6,762,000	62%*
April thru July 2020	4,100,000	57%*

* 2020 forecast reduced due to below average precipitation and dry soil conditions.

Reservoir	Current Elevation	Current Storage Acre-Feet	Current % Capacity	Projected Elevation on 1/1/2021 ¹
Lake Mead	1,090.6	10,912,000	42%	1,086.4
Lake Powell	3,606.5	12,377,000	50%	3,600.7

Data retrieved June 4, 2020

¹ Based on Reclamation's May 2020 24 Month Study Most Probable Inflow.

Water Use In Southern Nevada

Southern Nevada Water Use

2019 Actual Use in Acre-Feet

Nevada Annual Allocation	300,000
Diversions	472,314
Return Flows	238,318
Consumptive Use	233,996
Unused Allocation Available for Banking	66,004, (22%)

Southern Nevada Water Use

Diversions

Return Flows

Consumptive Use

January-April 2020	126,029	77,430	48,599
--------------------	---------	--------	--------

Banked Water (through end of 2019)

Acre-Feet

Ground Water Recharge in So. Nevada	358,315
Banked in Lake Mead	785,913
Banked in California and Arizona	944,071
Total	2,088,299