

Colorado River Commission of Nevada




Natural Resources Group Hydrologic Update June 13, 2017



Unregulated Inflow & Storage

As of June 12, 2017

Projected unregulated inflow to Lake Powell	MAF*	% Avg**
WY 2017 (Forecast):	12.4	114%
April-July 2017 (Forecast):	8.3	116%

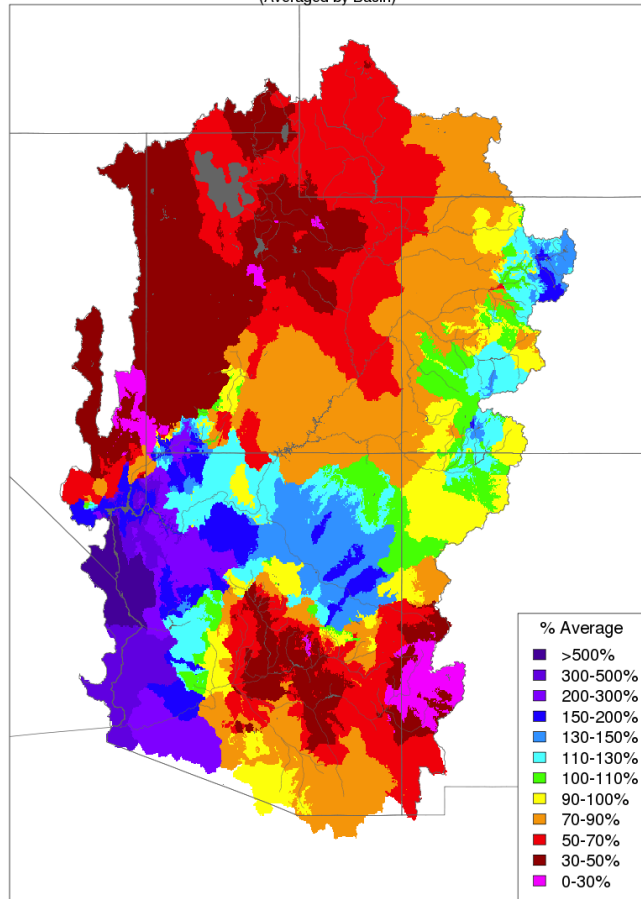
Storage	Elevation (f)	MAF*	% Capacity	Δ year
Lake Mead	1,081.0	10.1	39%	 8.9 ft
Lake Powell	3,625.9	14.4	59%	 13.0 ft
Total storage		32.5	55%	 2.0 maf

*MAF=Million Acre-Feet

**30-year average, from 1981-2010 (current normal)

Precipitation

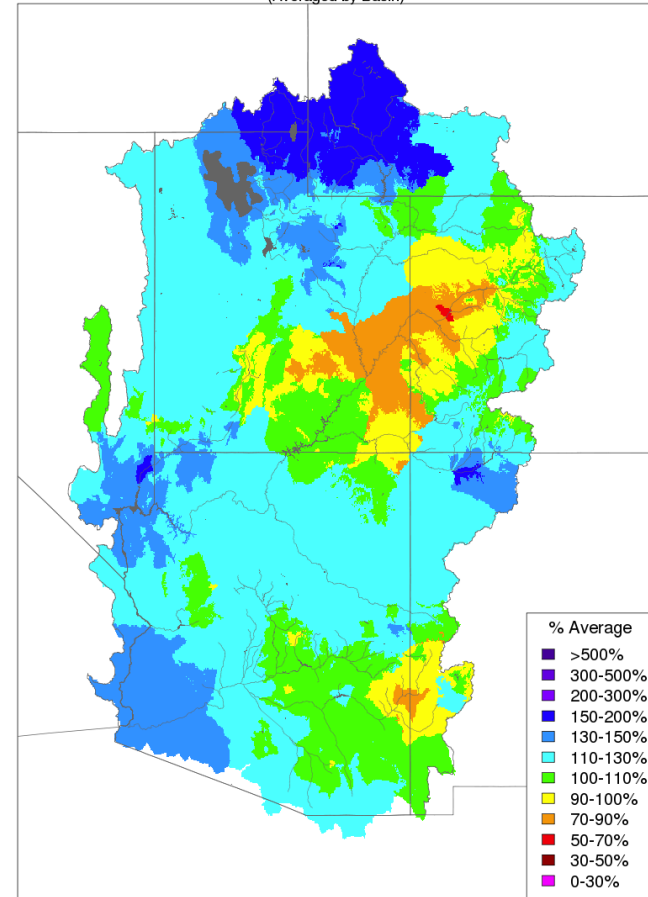
Monthly Precipitation - May 2017
(Averaged by Basin)



Prepared by NOAA, Colorado Basin River Forecast Center
Salt Lake City, Utah, www.cbrfc.noaa.gov

Above Lake Powell
May precipitation: 94%

Water Year Precipitation, October 2016 - May 2017
(Averaged by Basin)



Prepared by NOAA, Colorado Basin River Forecast Center
Salt Lake City, Utah, www.cbrfc.noaa.gov

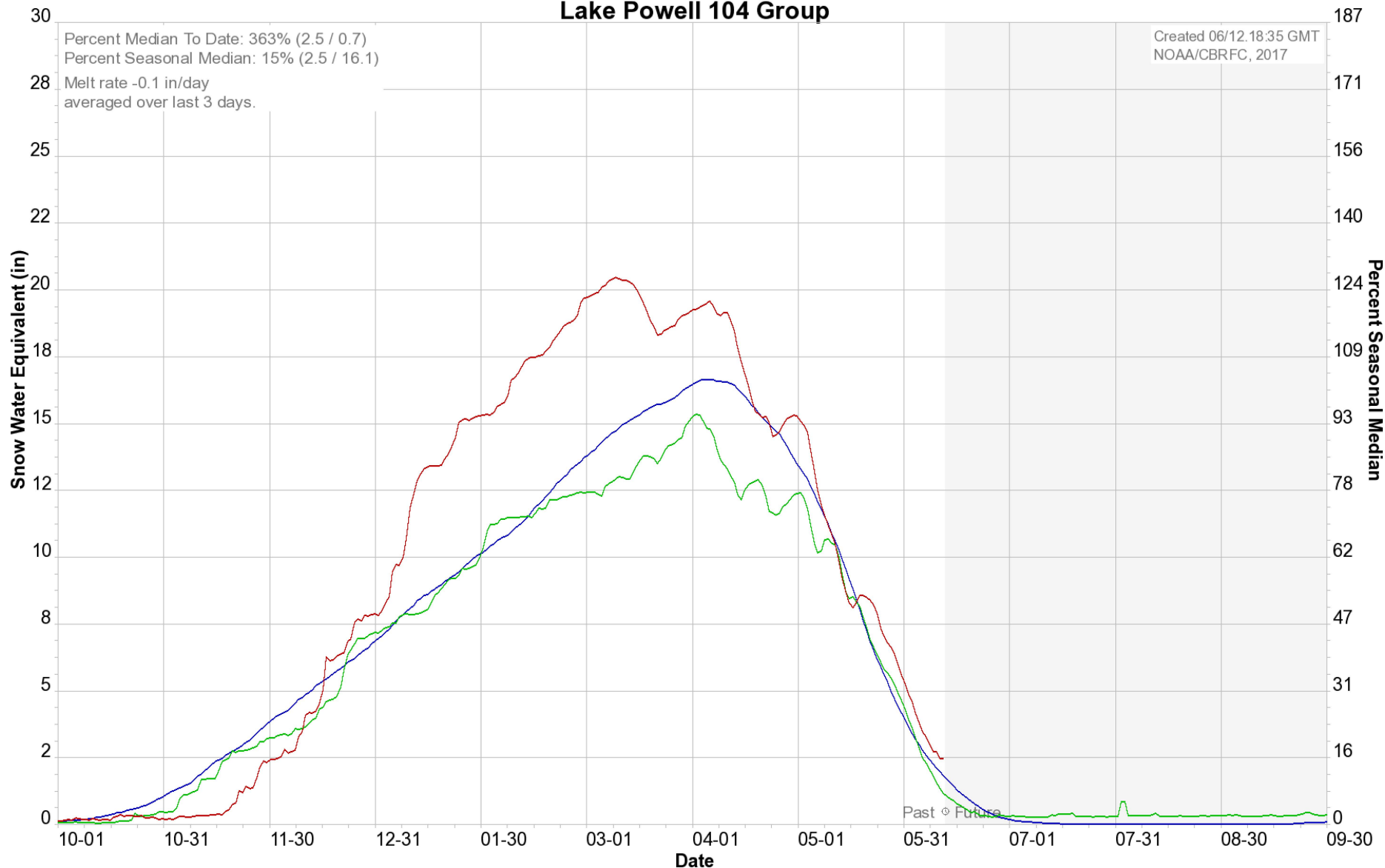
Above Lake Powell
WY Precipitation to date: 115%

Colorado Basin River Forecast Center Lake Powell 104 Group

Percent Median To Date: 363% (2.5 / 0.7)
Percent Seasonal Median: 15% (2.5 / 16.1)

Melt rate -0.1 in/day
averaged over last 3 days.

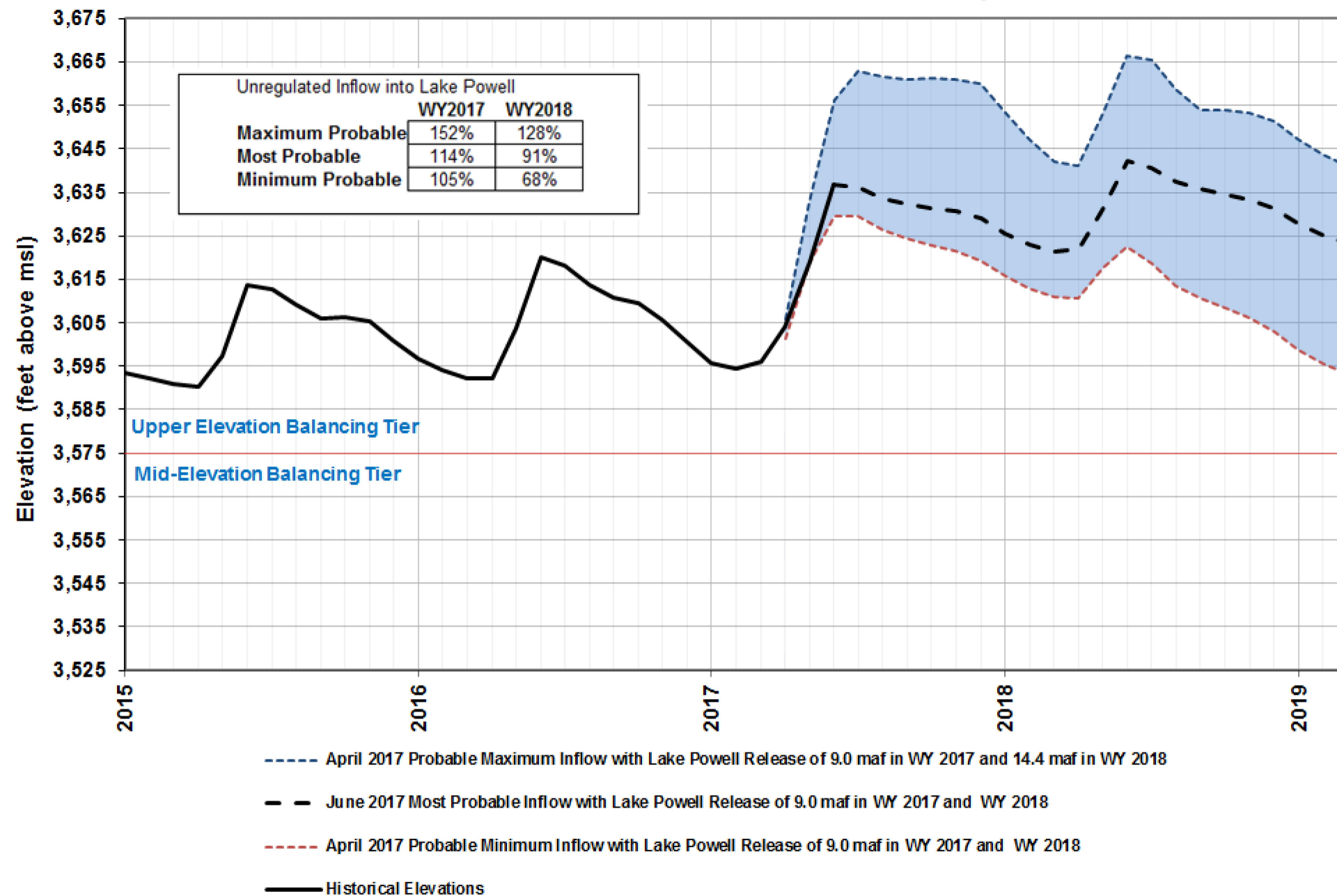
Created 06/12.18:35 GMT
NOAA/CBRFC, 2017



Average 1981-2010 — 2016 — 2017 —

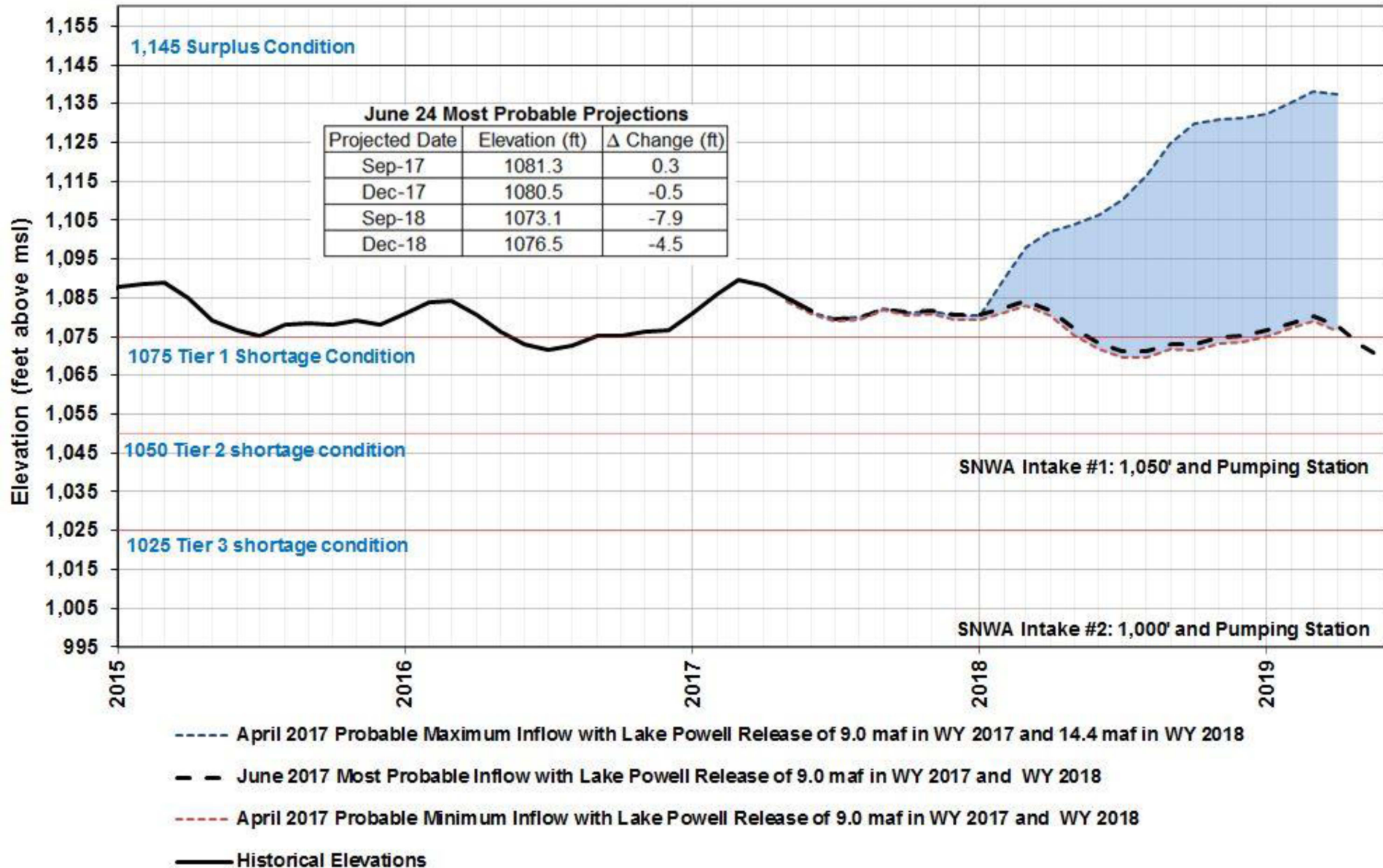
Lake Powell Projections

Reclamation's June 2017 24-Month Study



Lake Mead Projections

Reclamation's June 2017 24-Month Study



Water Use in Southern Nevada

January- April 2017

2017: Consumptive Use = 50,928* af

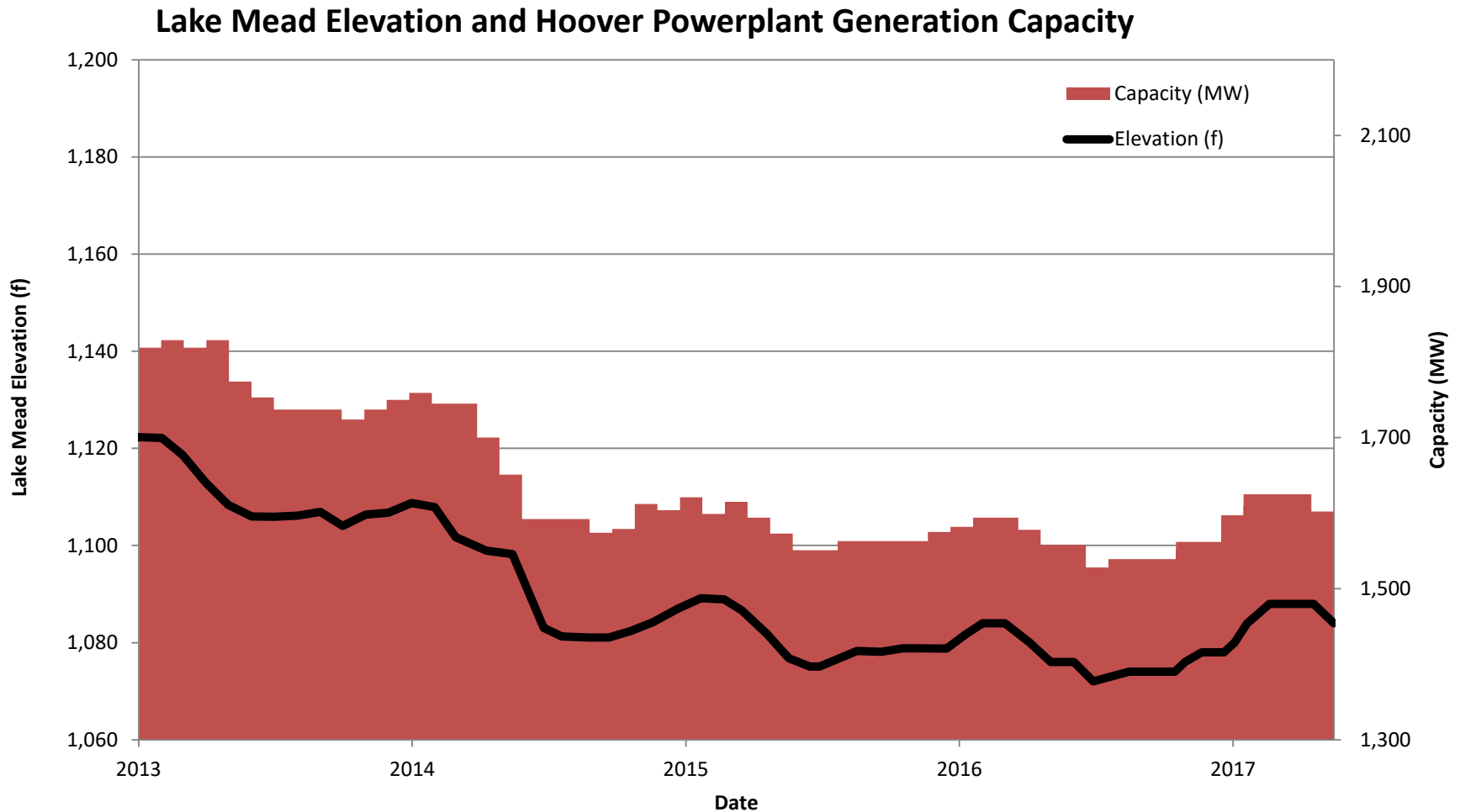
2016: Consumptive Use = 55,334 af

Difference = -4,406 af

*Subject to final accounting.



Hydropower Capacity



- On May 19, 2017 capacity was decreased 23 MW to 1,602 MW.

Colorado River Commission of Nevada

Questions?

Warren Turkett, Ph.D.
wturkett@crc.nv.gov

